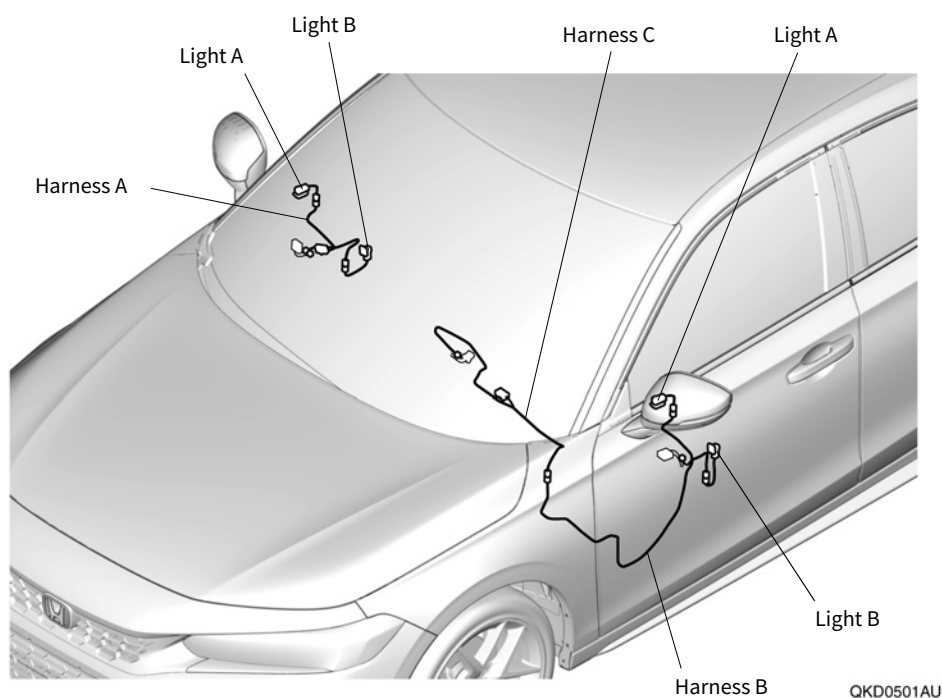


inner door handle & door pocket illumination

CIVIC

Installation outline drawing



For Safe Installation (Be sure to read)

About caution marks

- This manual uses the symbols below to explain possible injuries to workers and other people, as well as advice on installation.

⚠ 危険

指示に従わないと、死亡または重大な傷害に至るもの

⚠ 警告

指示に従わないと、死亡または重大な傷害に至る可能性があるもの

⚠ 注意

指示に従わないと、傷害をうける可能性があるもの

アドバイス

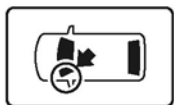
故障、破損するのを防ぐためのアドバイスや、知っておくと便利なこと



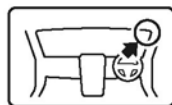
禁止事項

About icons

- 作業する場所と作業者の目線を下記のアイコンを使って表示します。



車両に対しての場所



インストルメントパネル付近に対しての場所

- 作業中に必ず守っていただくことを下記のアイコンを使って表示します。



保護めがねを着用する



革手袋を着用する



二人作業を行う



部品を段ボールまたは毛布の上に置く



バリを取り除く



タッチアップ ペイントを塗布し、十分に乾燥させる



部品を保管(お客様へ返却)する



貼り付け面を十分に圧着する



指定トルクで締め付ける

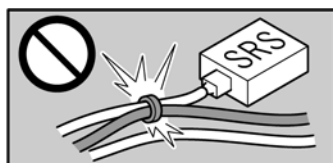


面に対して垂直に作業を行う



脱脂洗浄剤で清掃する

Wire Harness Handling Precautions



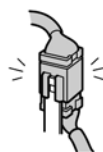
用品ハーネスとSRSハーネスを一緒にクランプしないこと。(指示がある場合を除く)



カブラ、端子の接続は、確実にロックするまで差し込むこと。



カブラ、端子類の接続を外す時は、ハーネスを引っ張らないこと。



ステー等から取り外したカブラは必ず元に戻すこと。



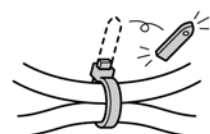
ハーネス類は強く引っ張らないこと。



用品ハーネスは、垂れ下がらないよう指定された場所にクランプすること。



ハーネス類は部品にかみ込ませないこと。



ハーネス バンドの余った部分は、カットすること。

General note

- Follow the maintenance information and related items in the service manual in addition to the installation instructions. Pay particular attention to safety.
- Do not scratch or damage the vehicle body and parts.
- Pay particular attention to clips and claws.
- Considering the time of restoration, check the installation condition before removing vehicle parts.
- Illustrations may differ slightly due to vehicle design changes.

Notes on electrical components

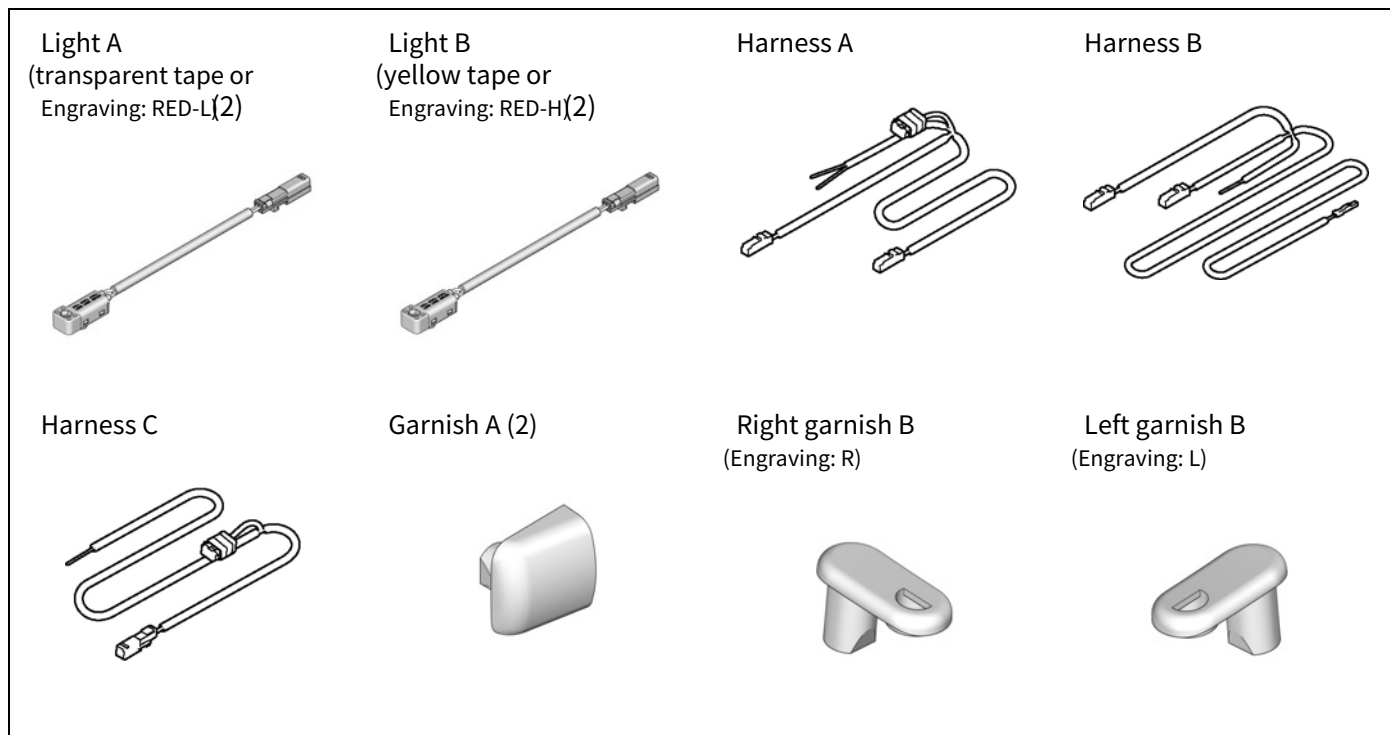
- Never perform installation work with the negative (-) terminal of the battery connected. .

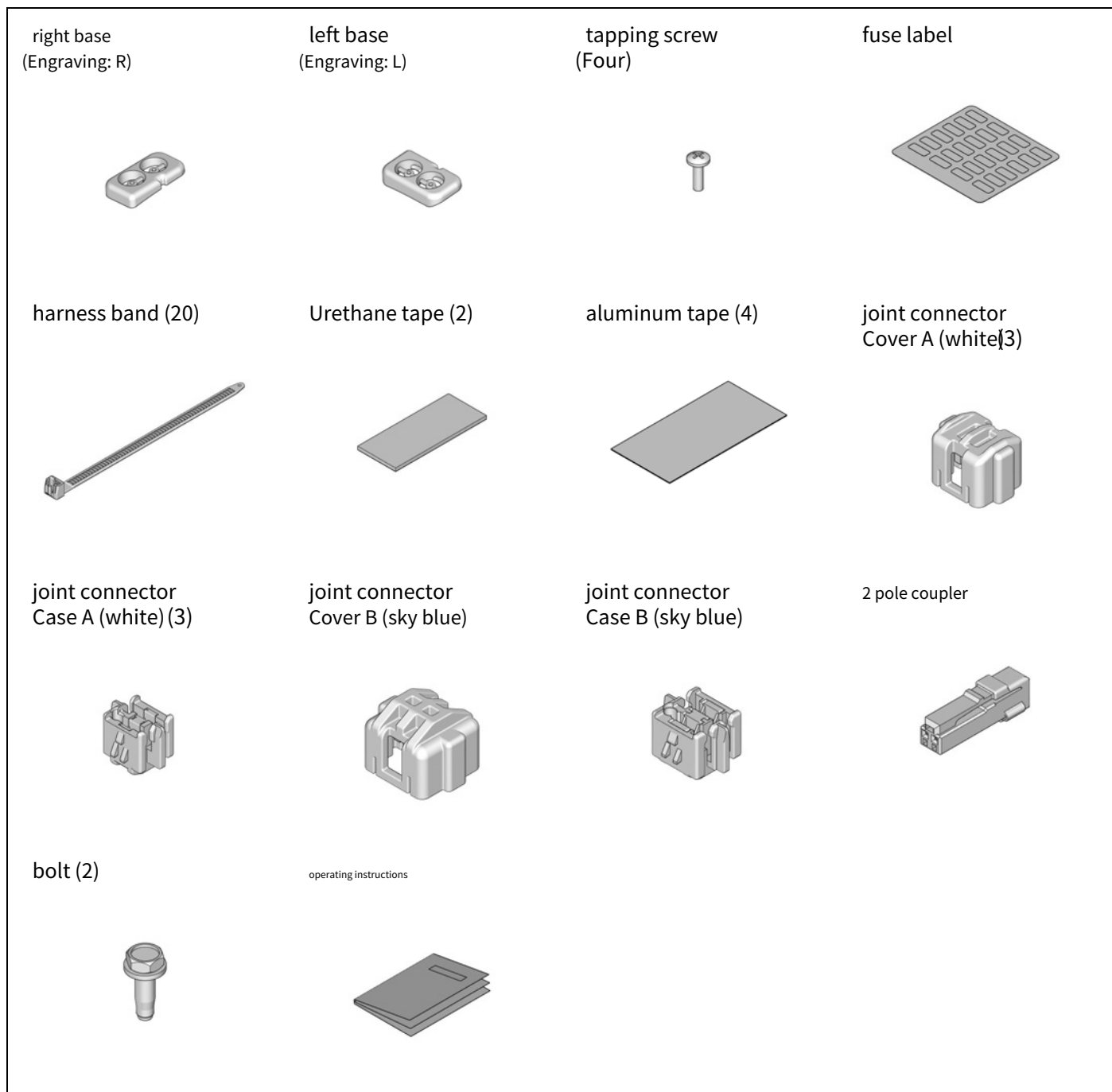
Precautions regarding this product

- **Be sure to use parts specified in this manual for bolts, screws, etc. Carelessly using similar parts may cause problems.**
- **Do not install or paste the product in a place exposed to direct sunlight or dust.**
- Keep the temperature of the surface to be attached between 15 and 40°C during the attachment work.
- Especially at low temperatures, the adhesiveness of tapes and films may decrease, so warm the surface to be attached before attaching.
- Apply sufficient pressure while being careful not to damage the supplies and vehicle parts.
- Be careful not to reattach it. Reattaching the tape may damage it or prevent the performance of the tape or film from being fully exhibited.

Component part

illumination kit





Required tools/instruments

- | | | |
|--|--|--|
| <ul style="list-style-type: none"> • Phillips screwdriver • Spanner • Drill • Ratchet • Insulating tape • pliers • wire • Handy remover set
(KTC ATP2014) equivalent | <ul style="list-style-type: none"> • Flat-blade screwdriver • Gabyo • drill bit • Ruler • Scissors • Degreasing agent (Honda genuine product) • Torque Wrench | <ul style="list-style-type: none"> • Socket • Safety glasses • rasp • Adhesive tape • Nippers • Waste cloth • knife |
|--|--|--|

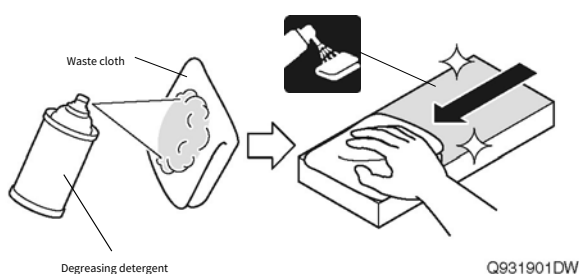
Mounting method and procedure

Cleaning method with degreasing detergent

- Soak a rag in degreasing detergent and wipe off oil, dust, dirt, etc. from the surface to be attached.

アドバイス

- Always use genuine Honda degreasing agents.
- Do not apply degreasing detergent directly to the application surface.
- Allow to dry thoroughly before pasting.

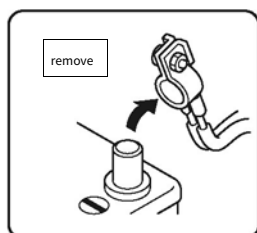
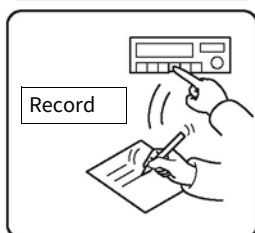
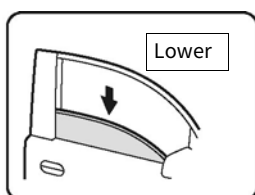


battery negative (-) terminal removal

1. Perform work before disconnecting the battery.
2. Audio, navigation, etc. as needed
Record some settings.
3. Disconnect the negative (-) terminal of the battery.

アドバイス

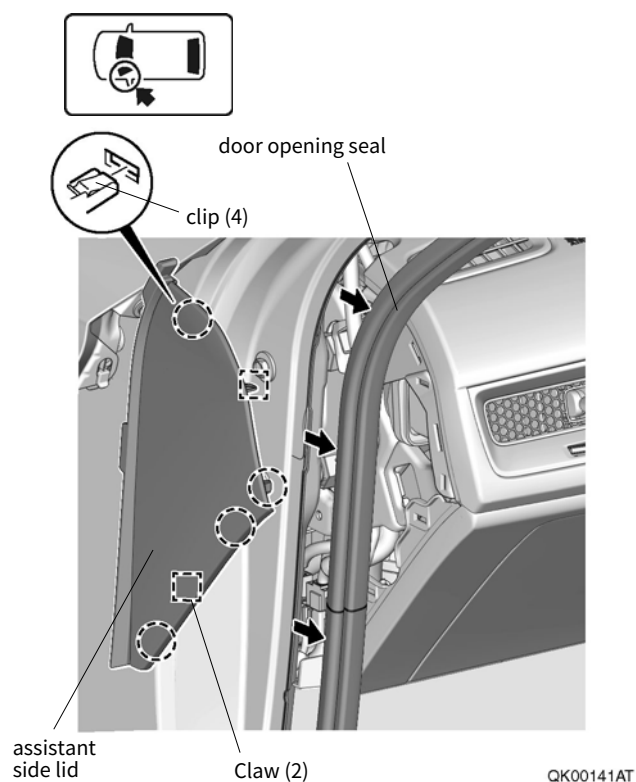
- For hybrid vehicles, do not connect the negative (-) terminal of the battery for 3 minutes after turning off the POWER switch.
Do not remove.



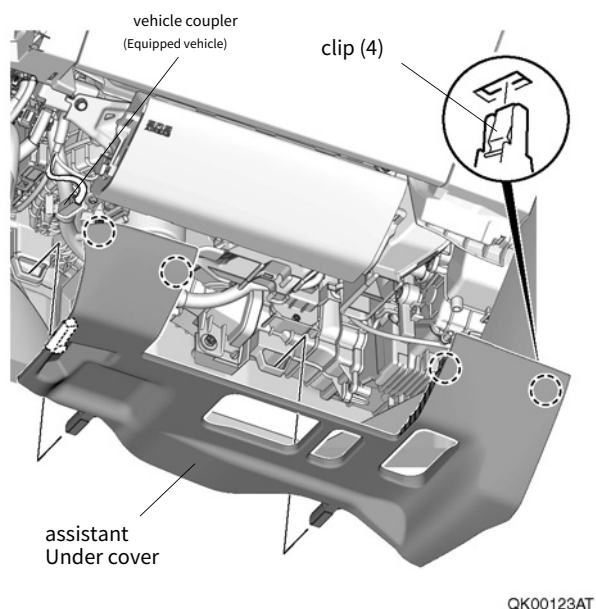
QCD0502BM

Removal of vehicle parts

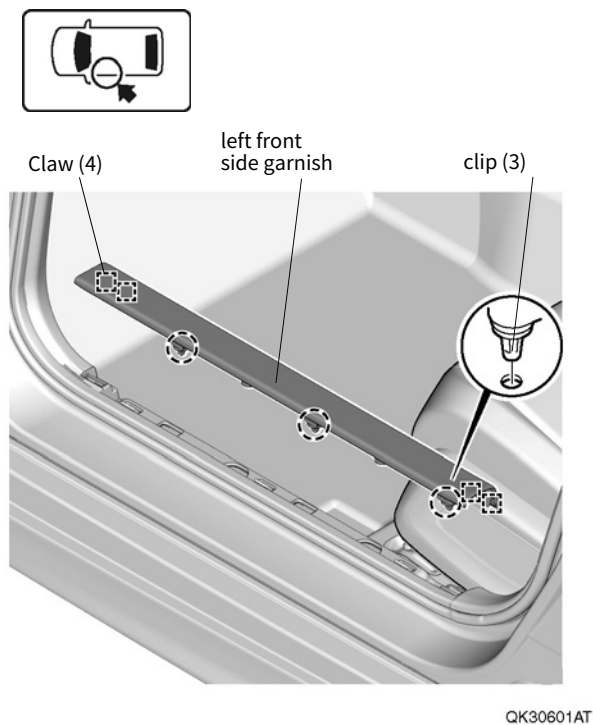
Four. Assistant side removes his lid.



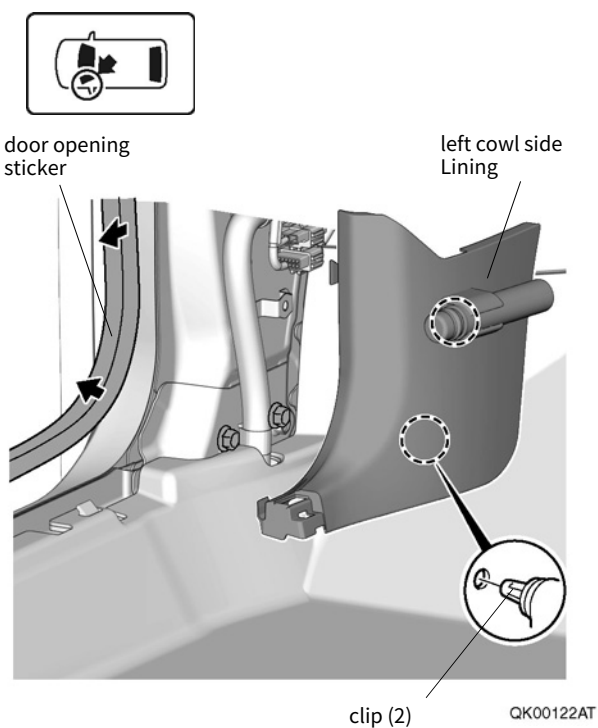
Five. Remove the assistant under cover.



6. Remove the left front side garnish.



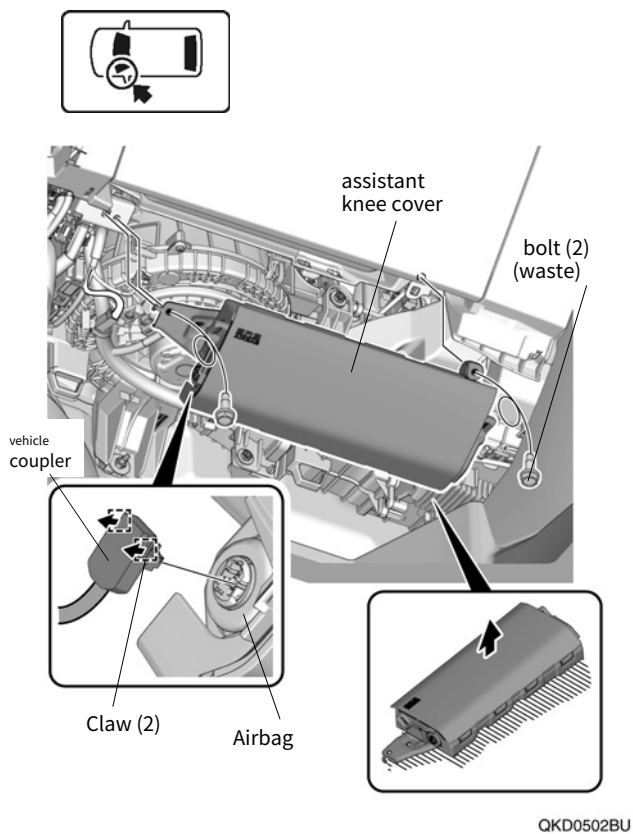
7. Remove the left cowl side lining.



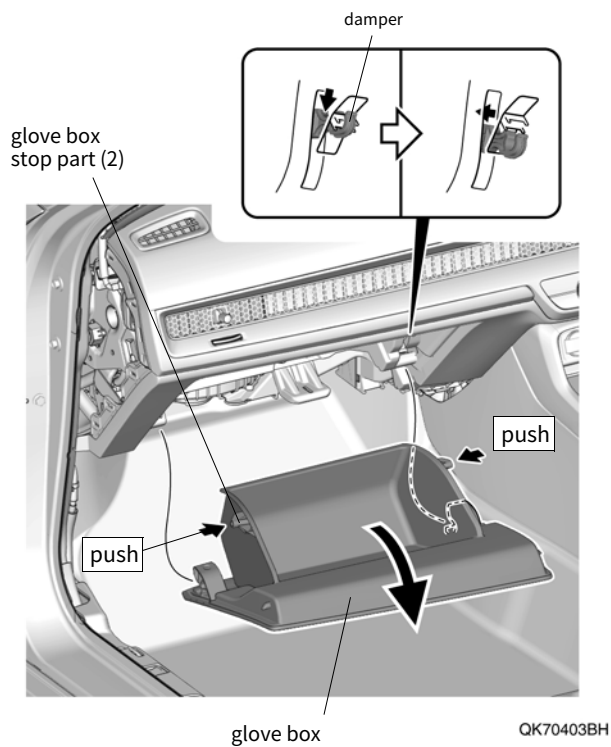
8. Remove the assistant knee cover.

⚠ 注意

- Remove the negative (-) terminal of the battery and leave it for at least 3 minutes before starting work.
- Be careful not to drop or hit the removed airbag.
- Always store with the pad side (surface) facing up.



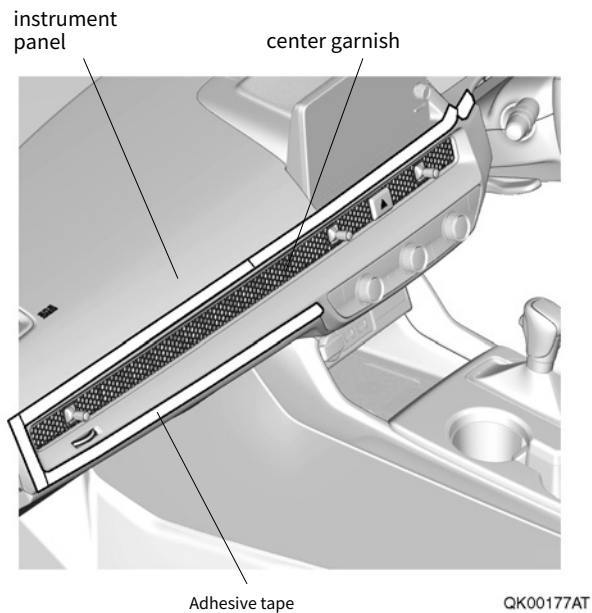
9. Remove glove box.



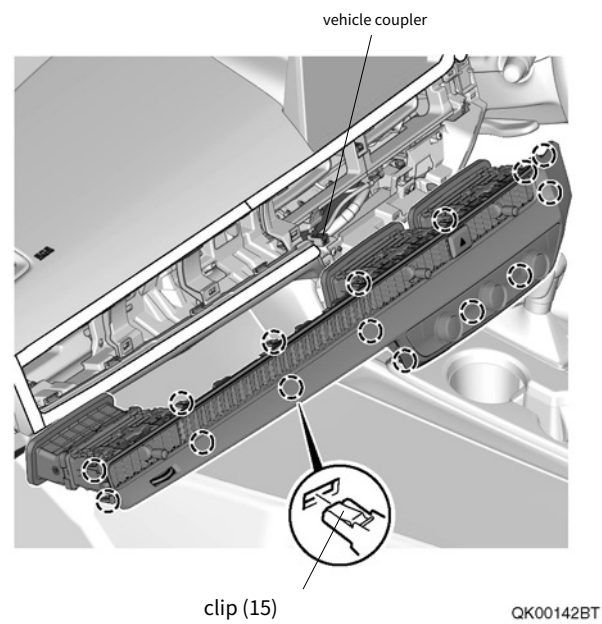
Ten. Adhesive tape is applied to protect the vehicle.

アドバイス

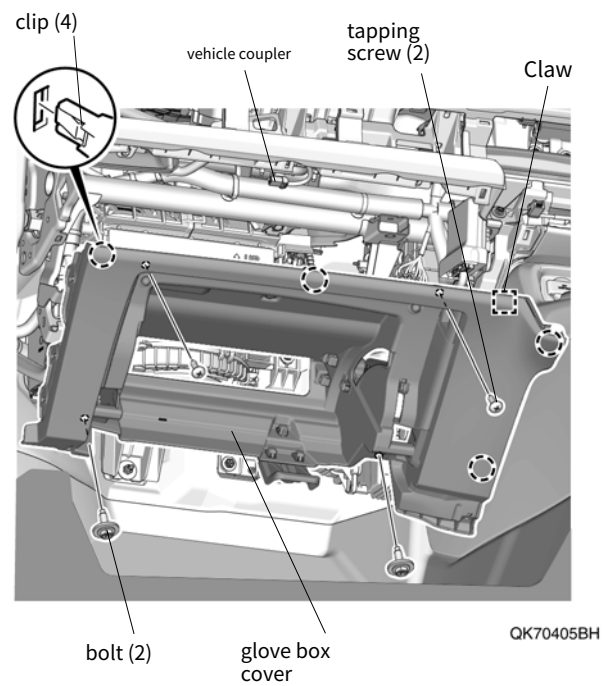
- Do not remove the adhesive tape until the restoration work is completed.



11. Remove the center garnish.



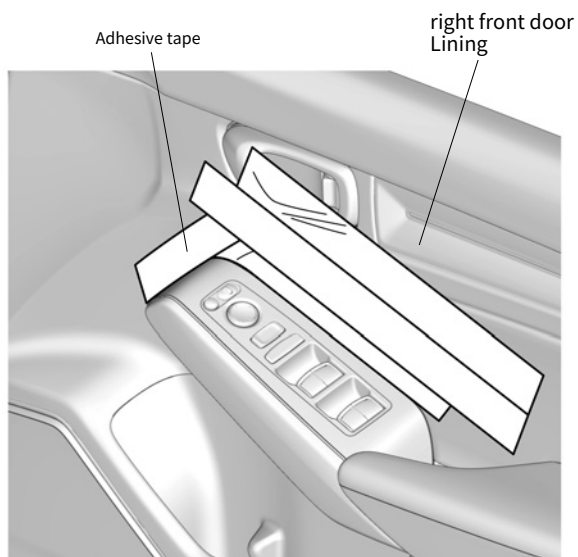
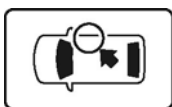
12. Remove the glove box cover.



13. Adhesive tape is applied to protect the vehicle.

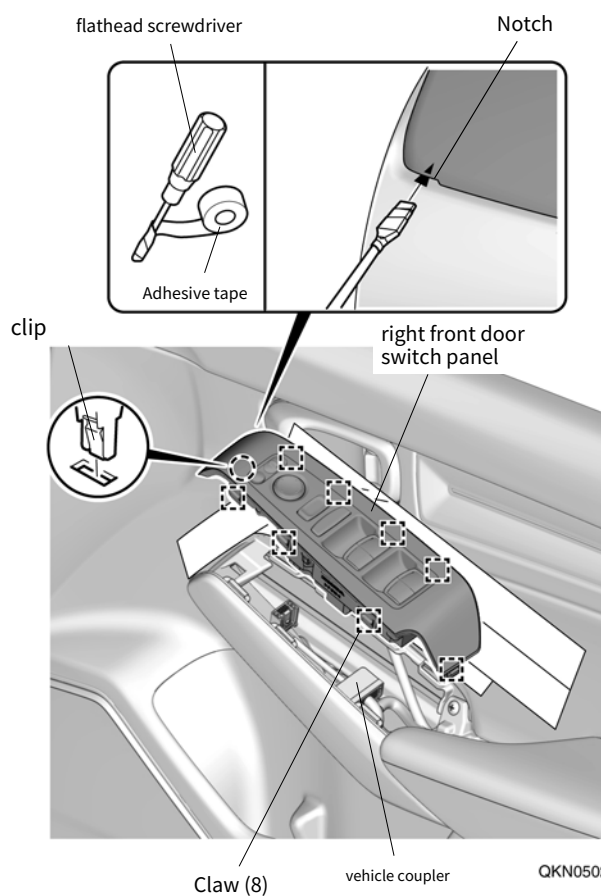
アドバイス

- Do not remove the adhesive tape until the restoration work is completed.



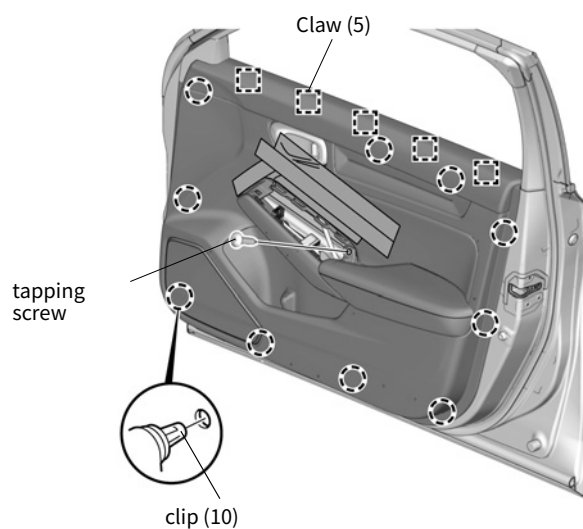
QL21301BU

14. Remove the right front door switch panel.



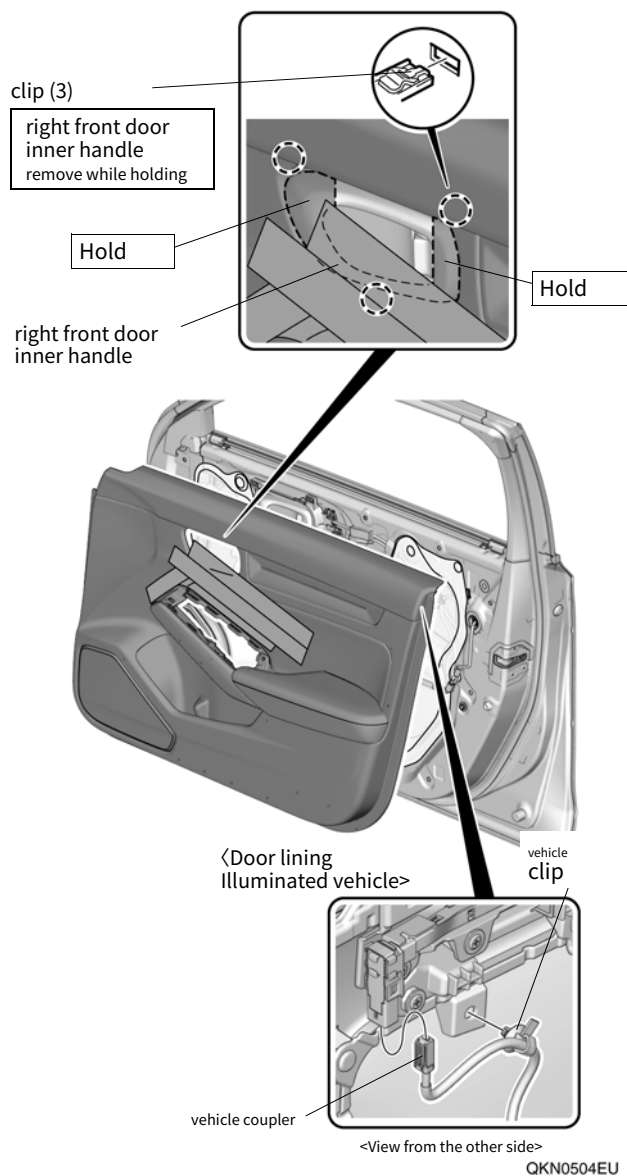
QKN0502CU

15. Raise the right front door lining.



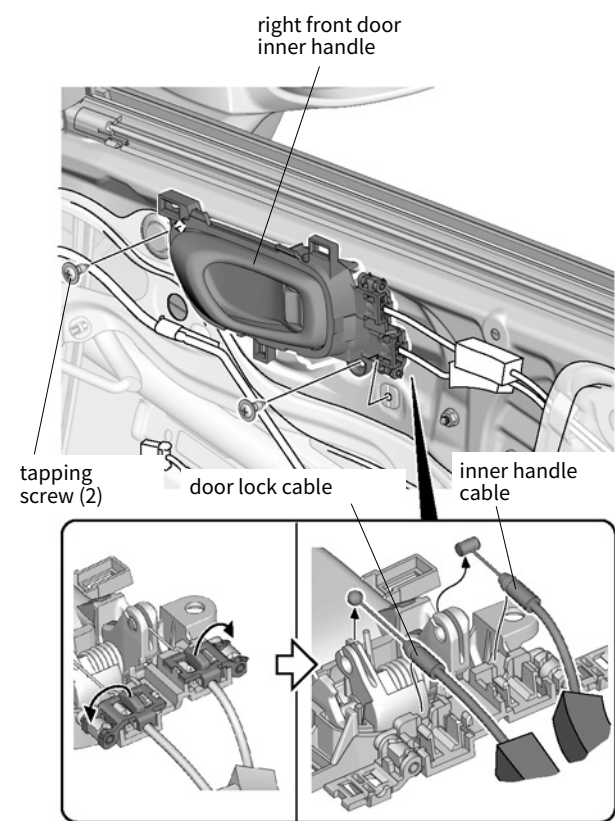
QKN0503DU

16. Remove the right front door lining.



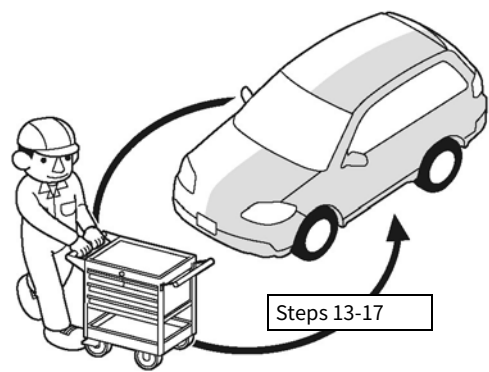
QKN0504EU

17. Remove the right front door inner handle.



QK70408AH

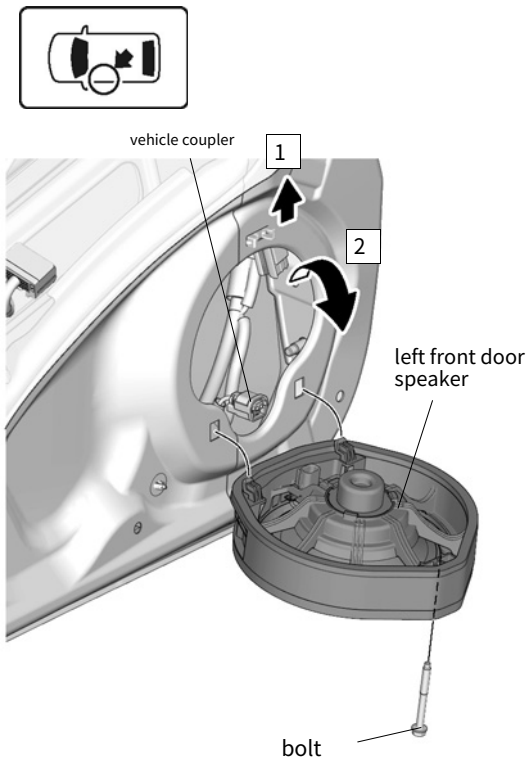
18. Do the same for the other side.



Q9D1013AM

19. Remove the left front door speaker.

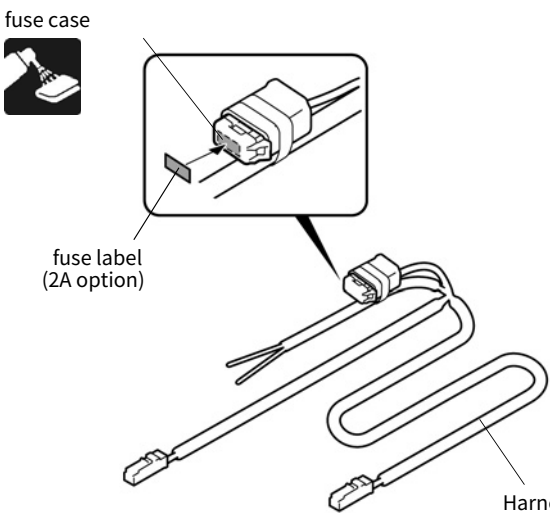
アドバイス
• Remove in the order shown.



QK70409AH

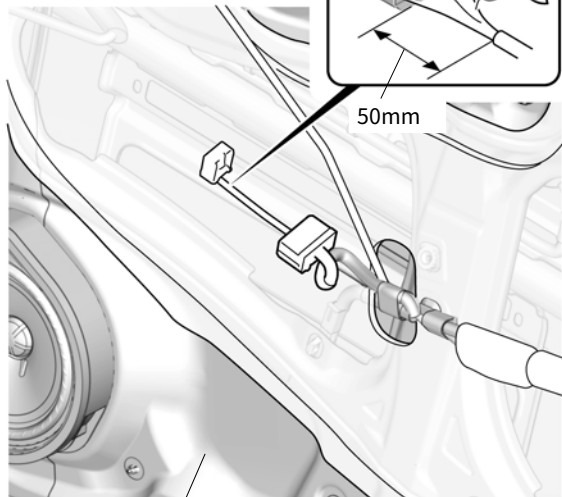
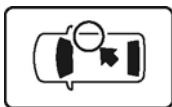
Wire of harness A

20. Affix the fuse label.

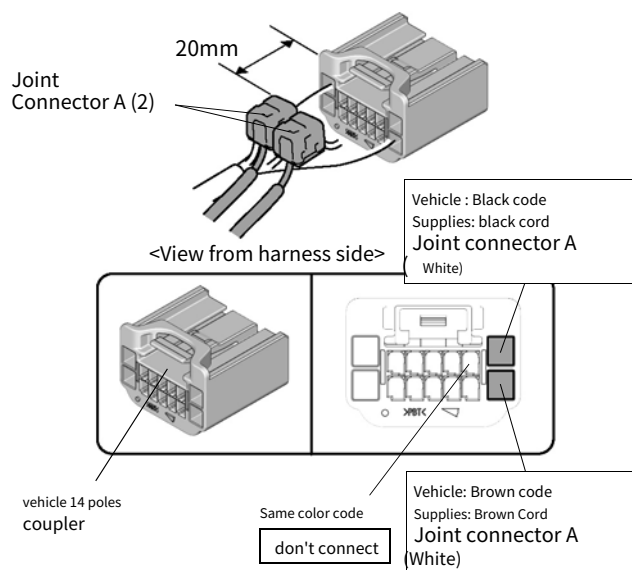


QK70310BH

アドバイス
<ul style="list-style-type: none"> • Be careful not to damage the vehicle harness.



アドバイス
<ul style="list-style-type: none">• Be careful not to confuse the connection positions of the cords.



1 supplies code

Case

2

3 vehicle code

4 cover

5 rock (1st row)

rock (Second row)

The diagram is divided into two numbered steps:

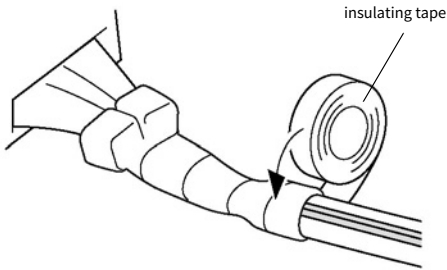
- Step 1:** A joint connector is being attached to a cord. A label "Lock up to 2nd stage is being done" points to the connector. A label "about 40mm" indicates the length of the cord being inserted. A label "supplies code" points to the cord being inserted.
- Step 2:** The joint connector is now fully attached. A label "insulating tape" points to a piece of tape being applied over the connector. A label "Insulation treatment" points to the area where the tape is being applied.

08E20-T43-0001-90

twenty three. Secure the cord of harness A.

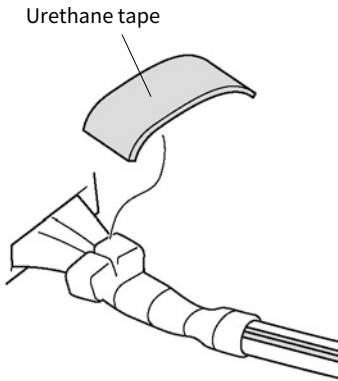
アドバイス

- Wrap around the vehicle harness tube or tape.



QG50113BT

twenty four. Paste the urethane tape.

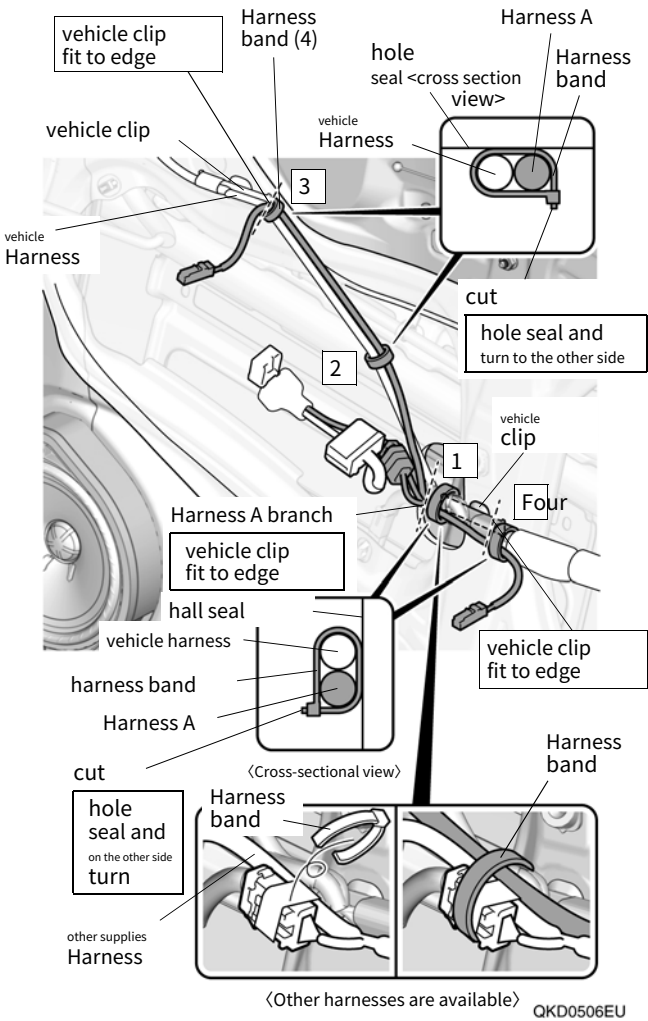


QG50112CT

twenty five. Secure harness A.

アドバイス

- Be careful not to damage the harness.
- Install in the order shown.

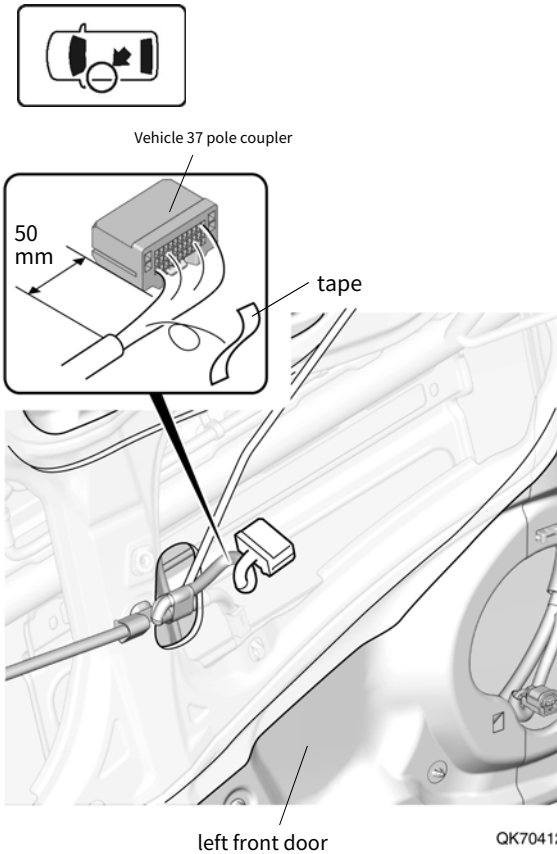


Wire of harness B

26. cut off the tape.

アドバイス

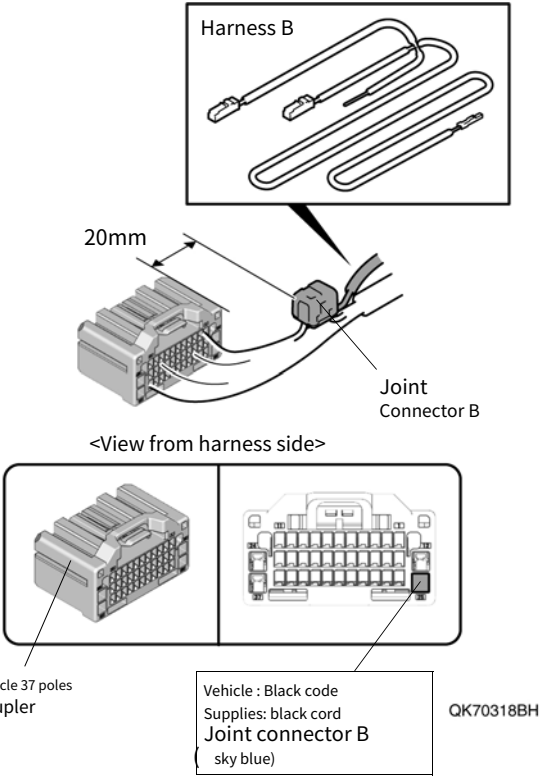
- Be careful not to damage the vehicle harness.



27. Connect the cord of harness B.
(Install the joint connector in step 22
Refer to "How to install the joint connector".)

アドバイス

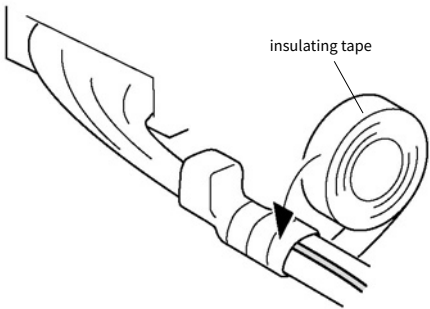
- Be careful not to confuse the connection positions of the cords.



28. Secure the cord of harness B.

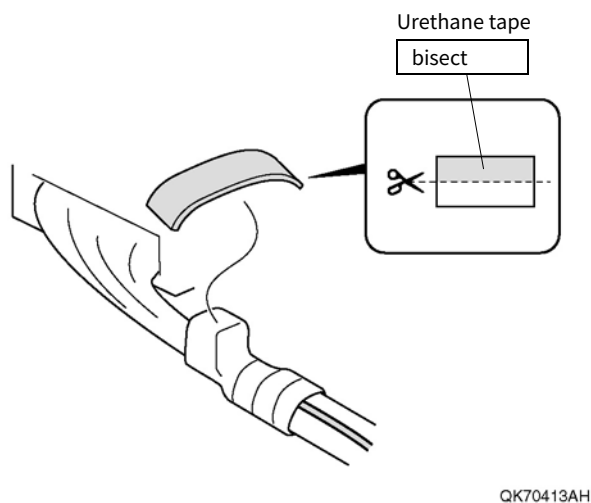
アドバイス

- Wrap around the vehicle harness tube or tape.



QJ80163AR

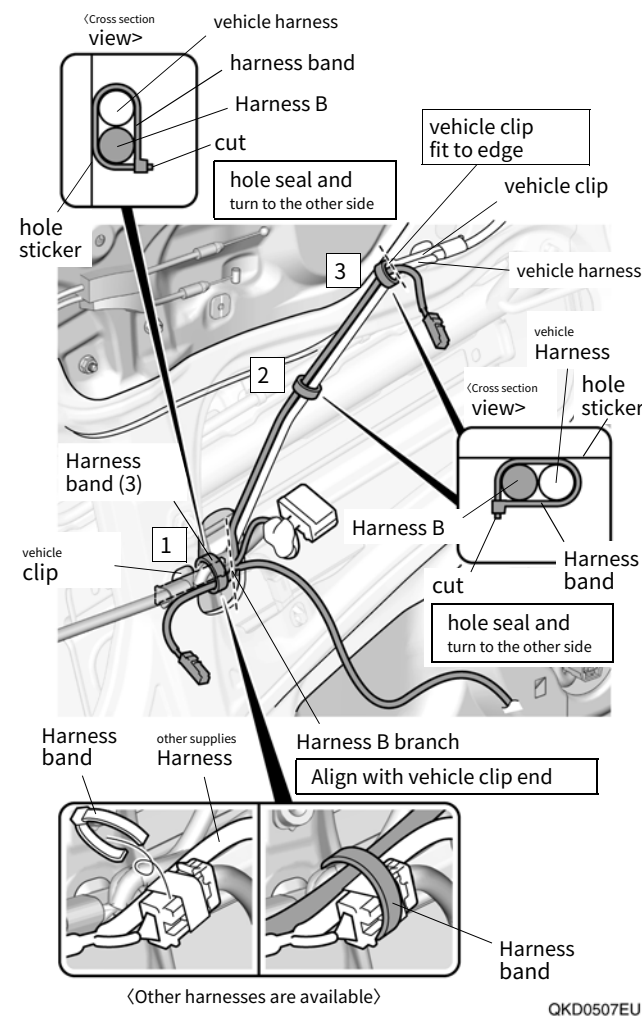
29. Paste the urethane tape.



30. Secure harness B.

アドバイス

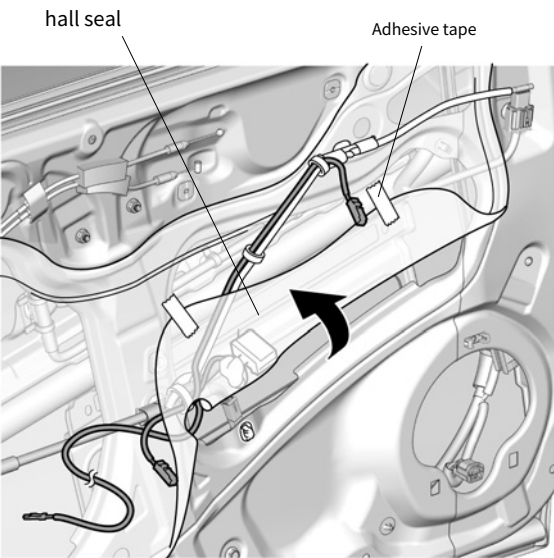
- Be careful not to damage the harness.
- Install in the order shown.



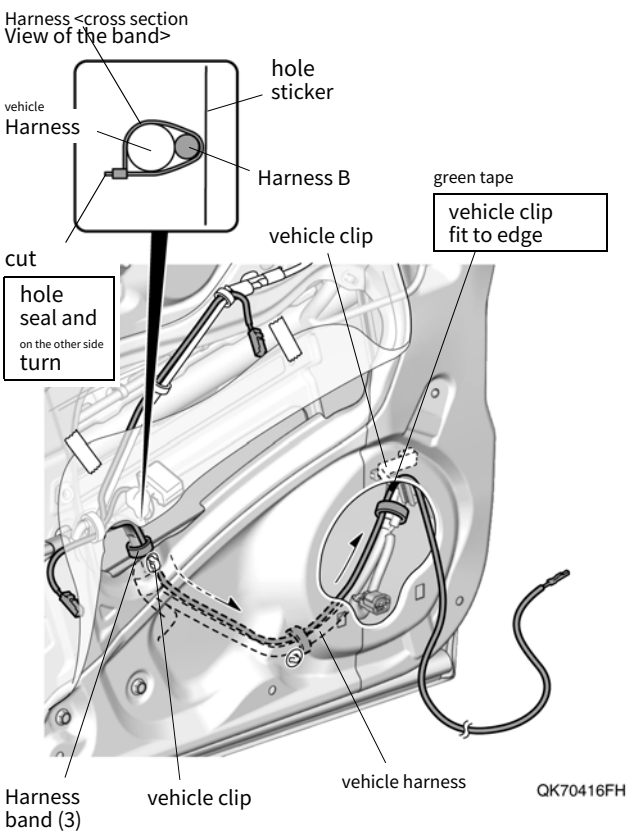
31. Flip the hole seal.

アドバイス

- Be careful not to contaminate the vehicle parts as they are coated with sealant.

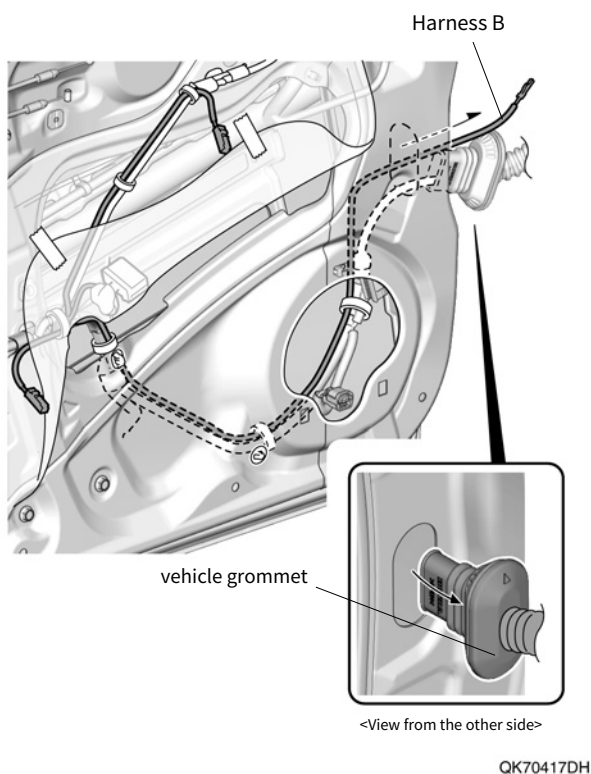


32. Secure harness B.



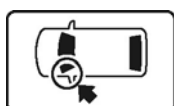
33. Remove vehicle grommet.

34. Run harness B.

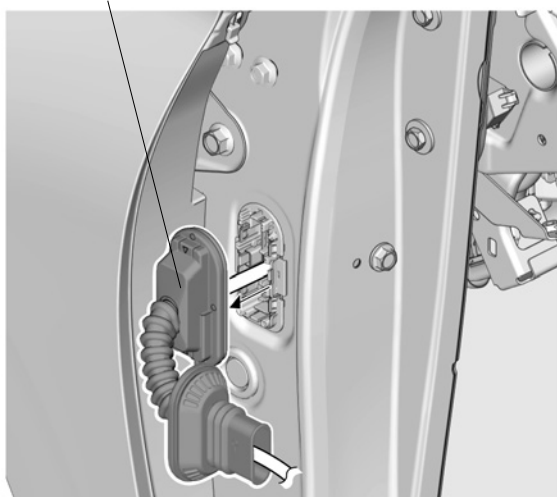


35. Replace the hall seal and left front door speaker.
to the rear.

36. Remove vehicle grommet.

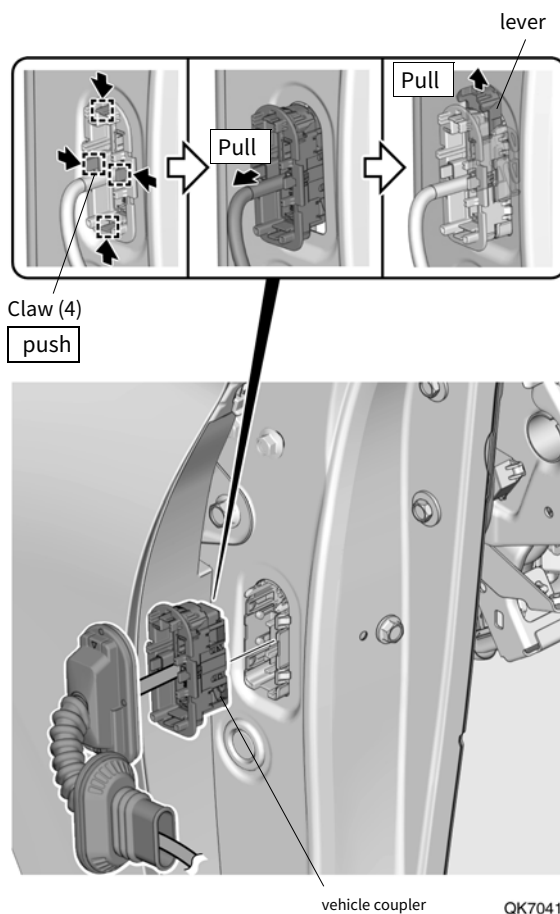


vehicle grommet



QL21401CU

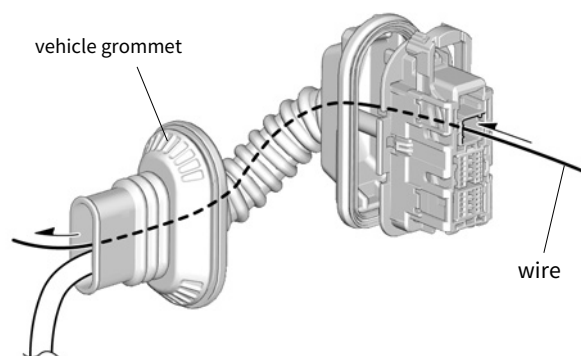
37. Disconnect the vehicle coupler.



38. pass the wire through.

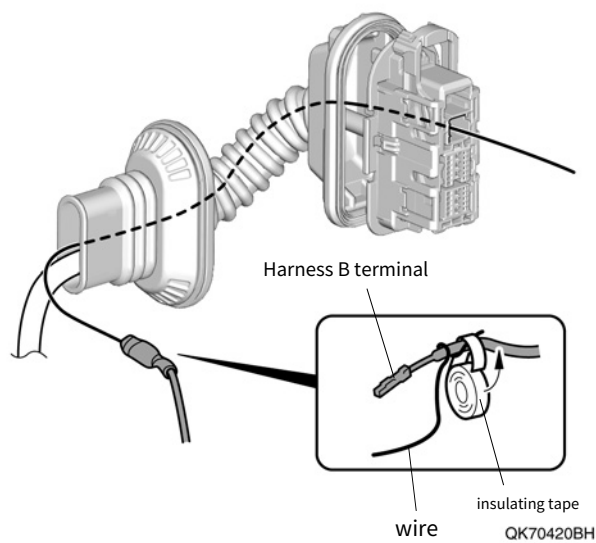
アドバイス

- Be careful not to damage the vehicle grommet and vehicle harness with the tip of the wire.
- Make sure the wires do not get caught in the vehicle harness inside the vehicle grommet.



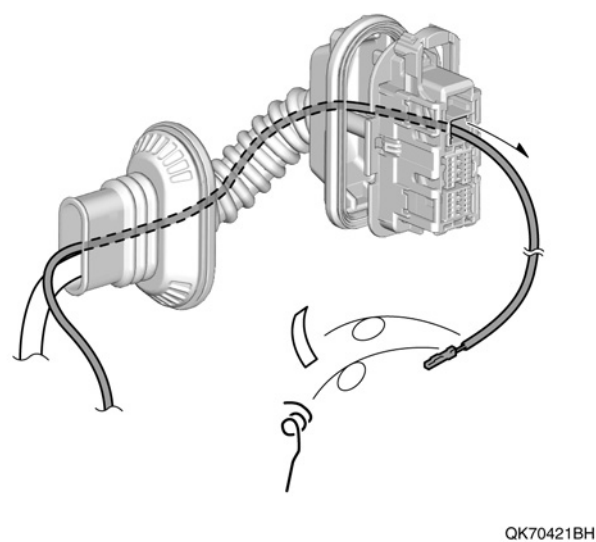
QK70419BH

39. Install the pin.

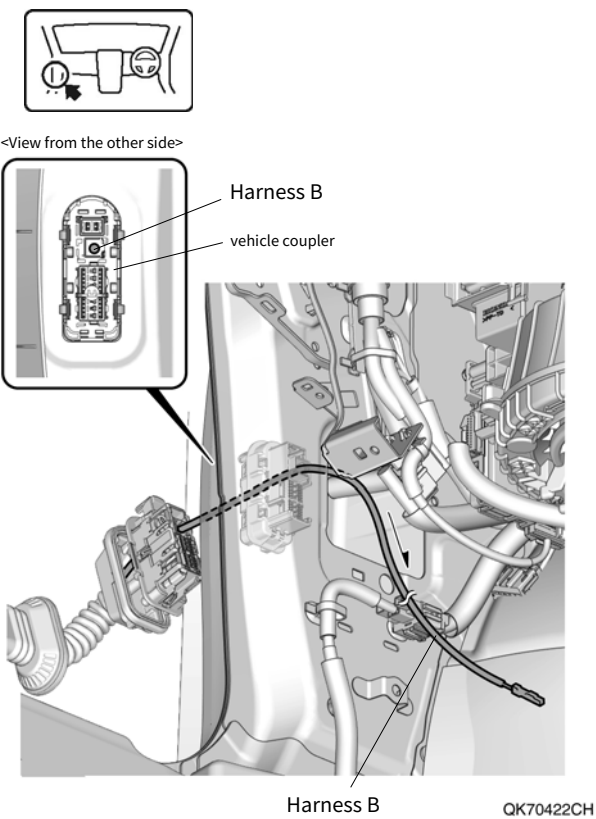


40. Run harness B.

41. remove the needle.



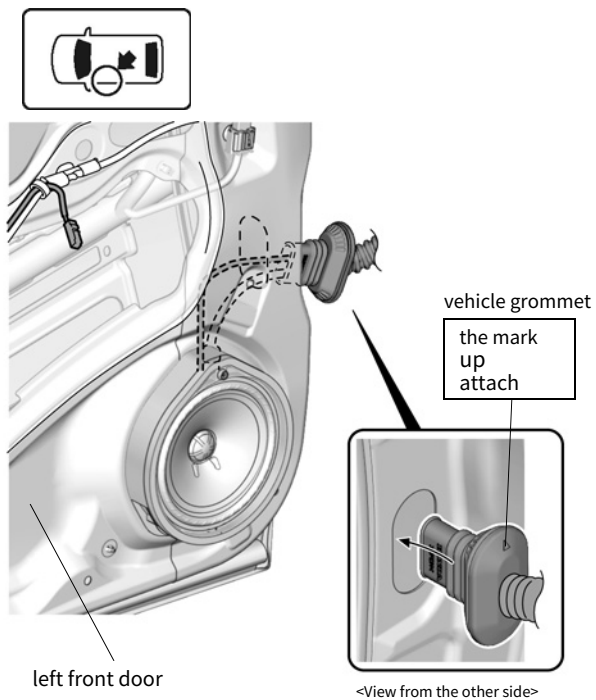
42. Run harness B.



43. Reinstall the vehicle grommet removed in step 33.
wear.

アドバイス

- Hold the grommet when installing.
- Make sure the grommet is securely attached.
- Be careful not to twist the grommet.



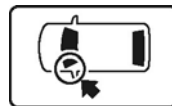
QK70464AH

44. Reinstall the vehicle grommet removed in step 36.
wear.

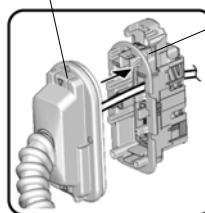
アドバイス

- Make sure the grommet is securely attached.

45. Reconnect the vehicle coupler.

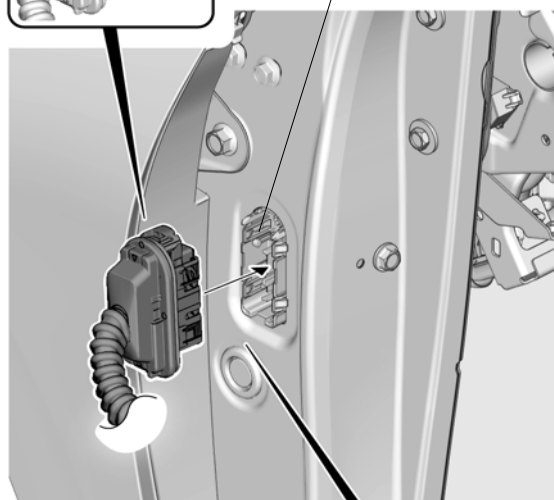


vehicle grommet



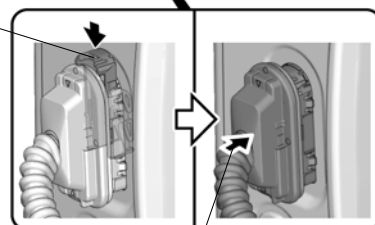
vehicle coupler

vehicle coupler



lever

Lower



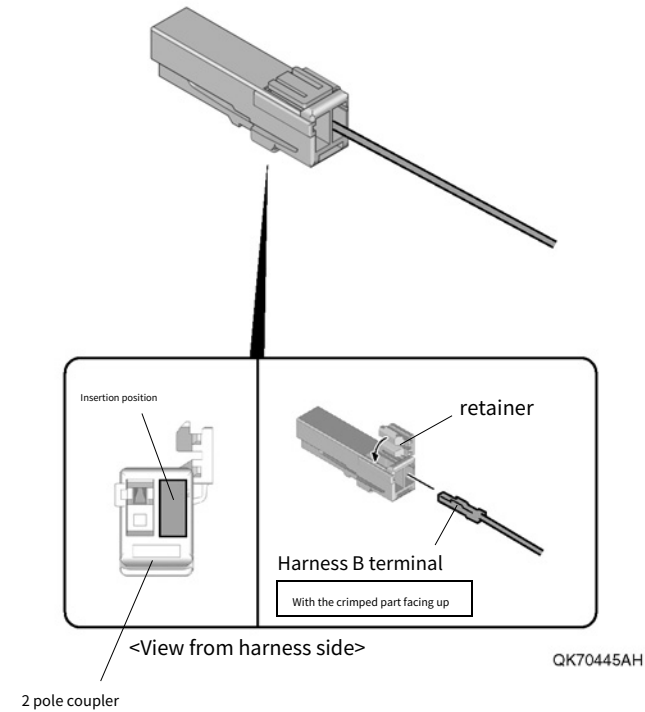
push in

QK70465BH

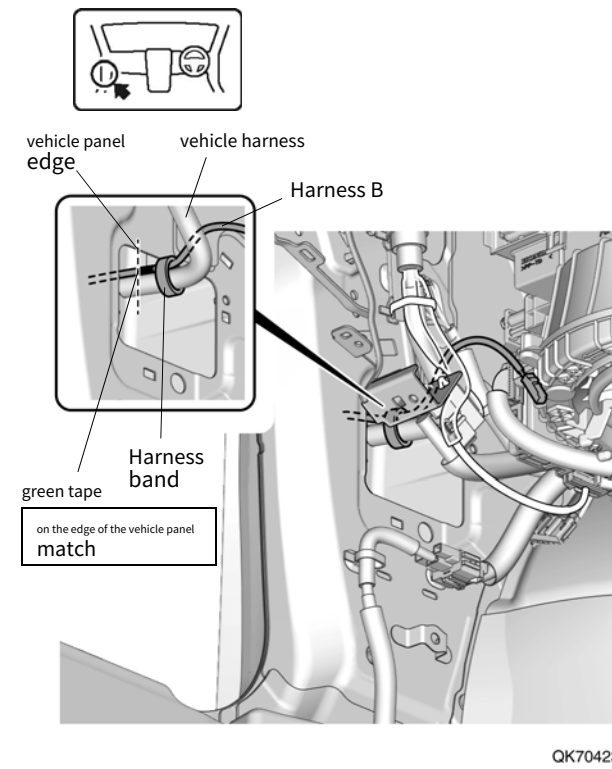
46. Insert the terminals of harness B.

アドバイス

- Pay attention to the insertion position and orientation of the terminal.
- Make sure the terminals are securely inserted.

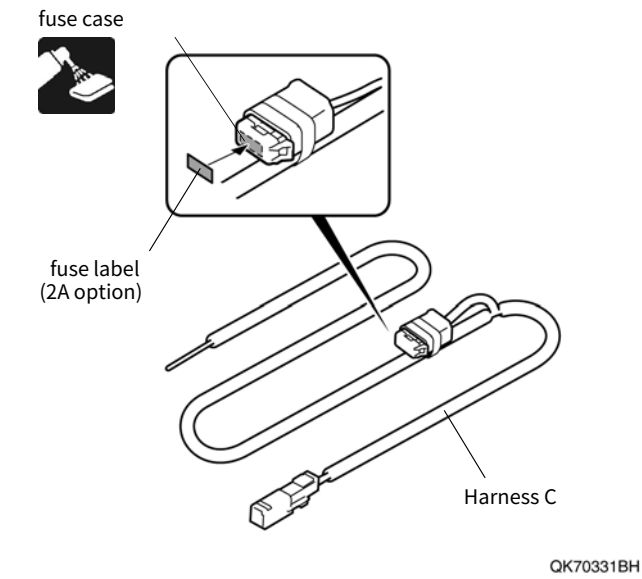


47. Secure harness B.



Wire of harness C

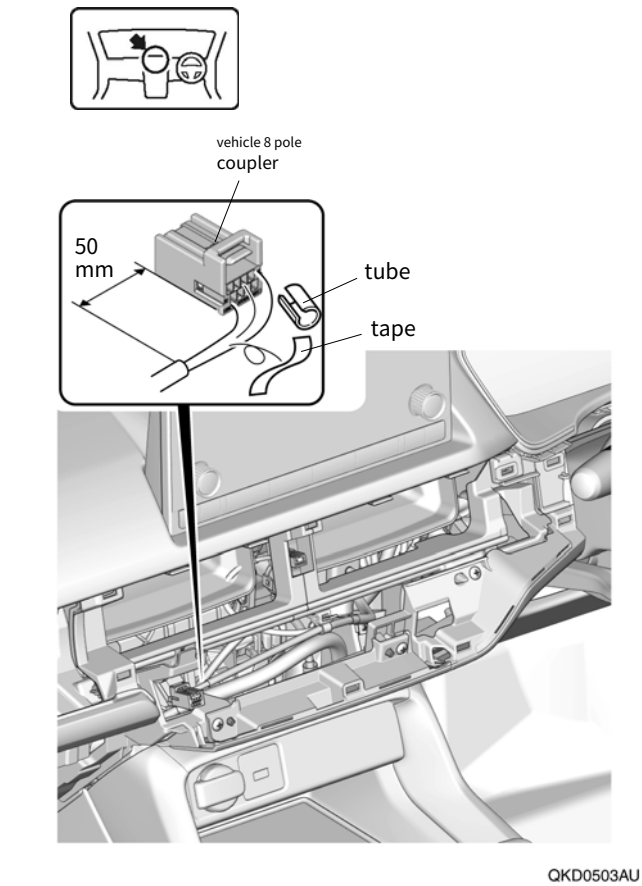
48. Affix the fuse label.



49. Cut out the tube.

アドバイス

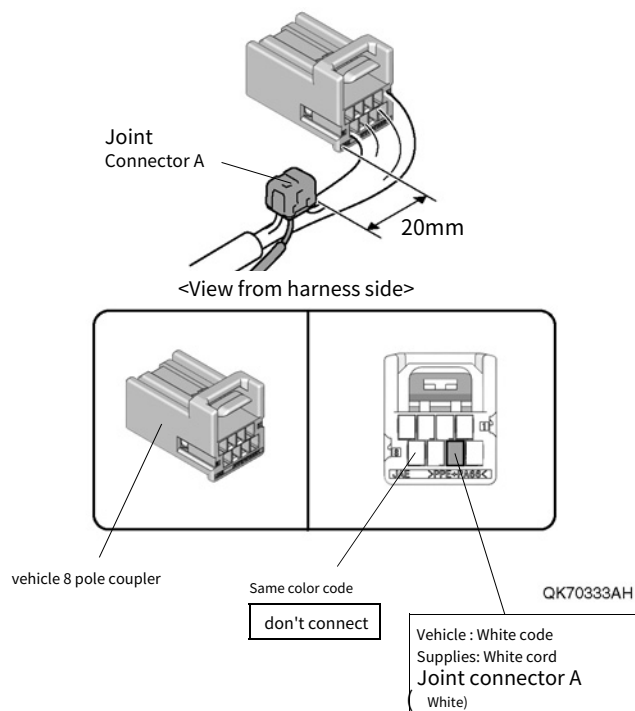
- Be careful not to damage the vehicle harness.



50. Connect the cord of harness C.
 (Install the joint connector in step 22
 Refer to "How to install the joint connector".
)

アドバイス

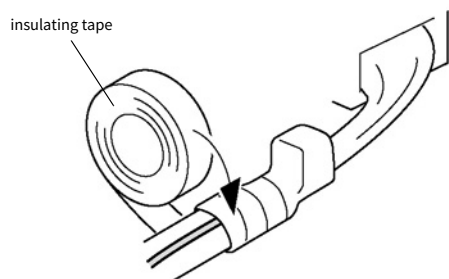
- Be careful not to mistake the connection position of the cord.



51. Secure the cord of harness C.

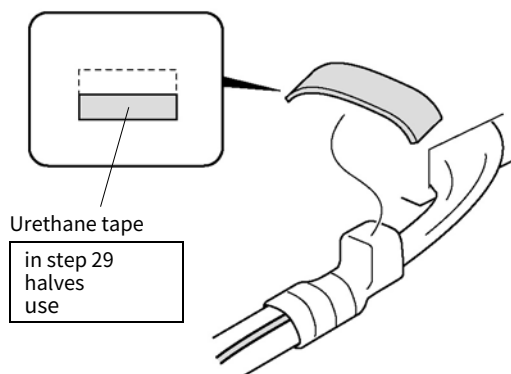
アドバイス

- Wrap around the vehicle harness tube or tape.



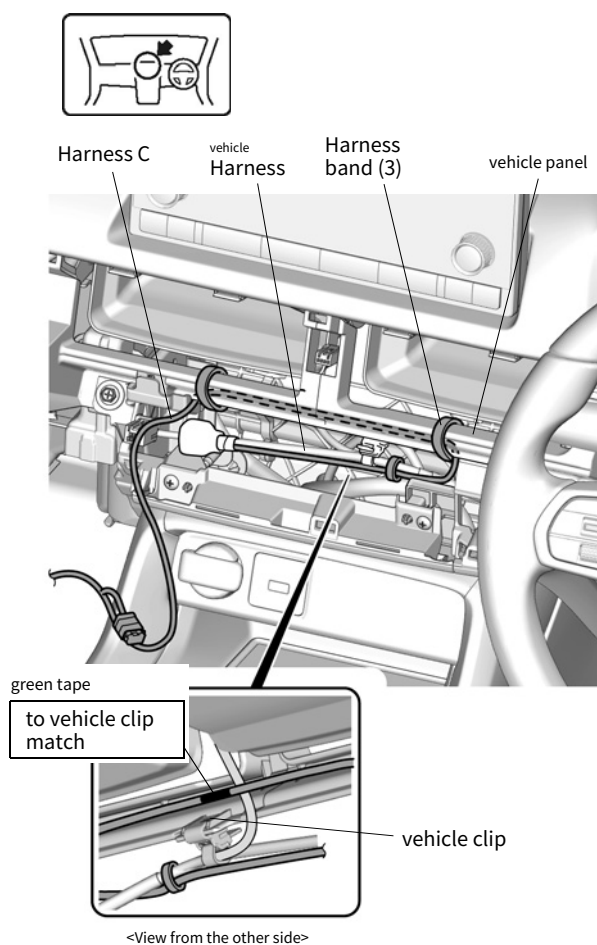
QK70341AH

52. Paste the urethane tape.



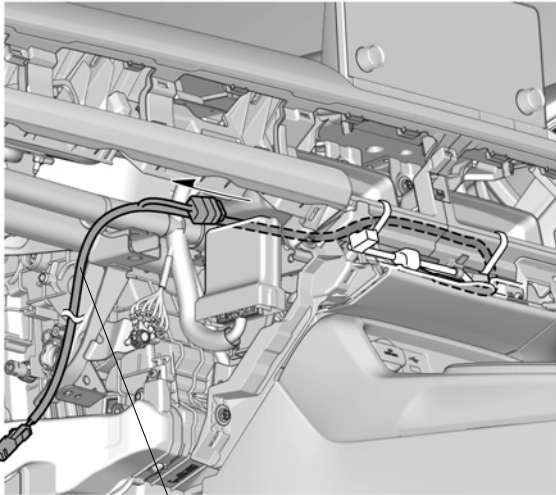
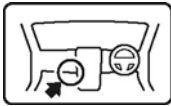
QK70334AH

53. Secure harness C.



QK70425CH

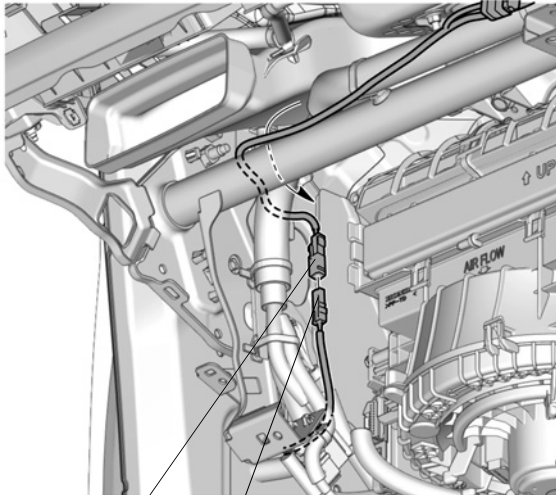
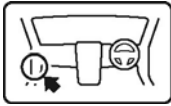
54. Run harness C.



Harness C

QK70426CH

55. Connect the coupler of harness B.

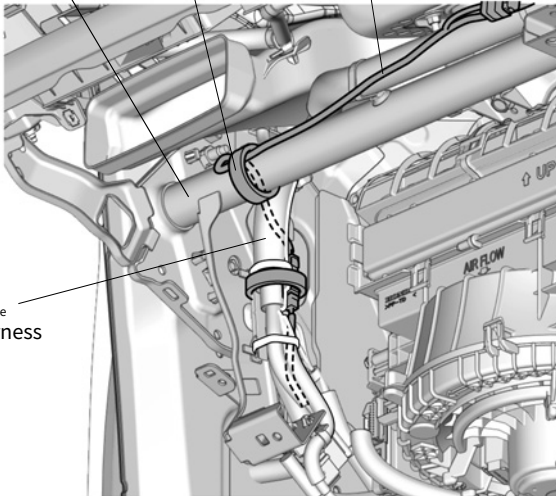
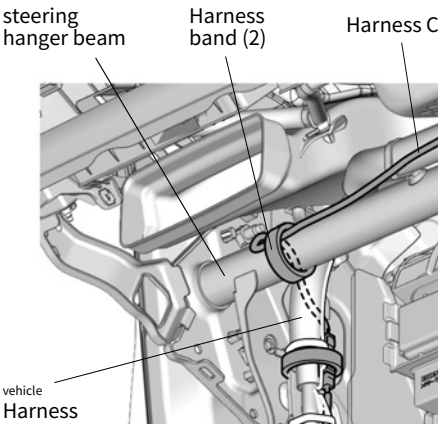


Harness C
2 pole coupler

of harness B
2 pole coupler

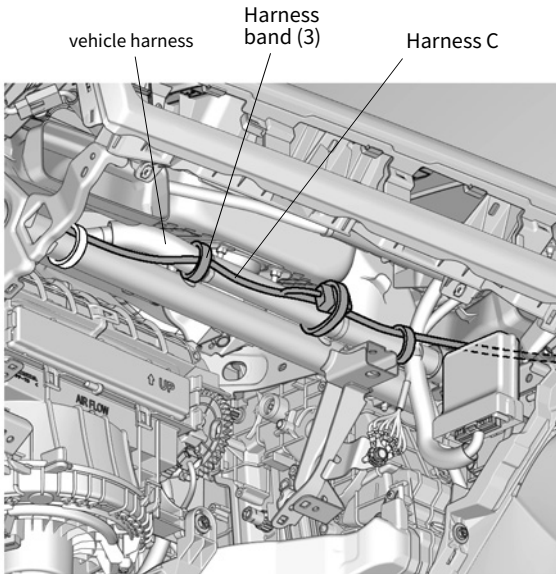
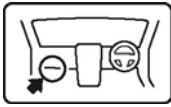
QK70427CH

56. Secure the coupler connection and harness C.



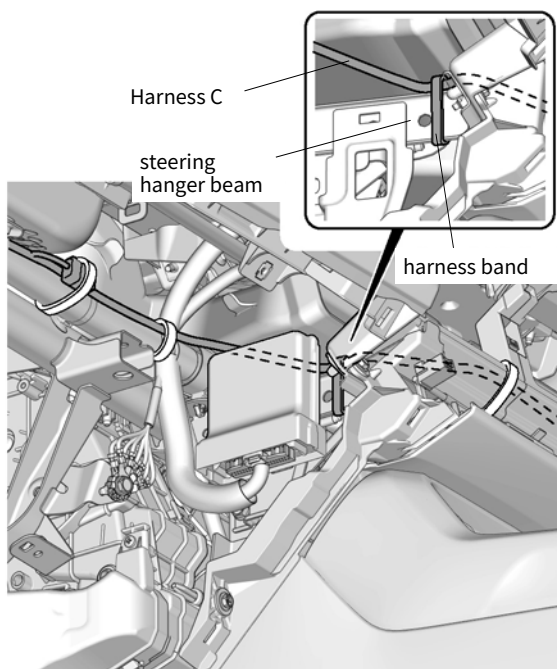
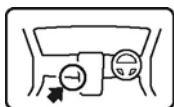
QK70428BH

57. Secure harness C.



QK70429BH

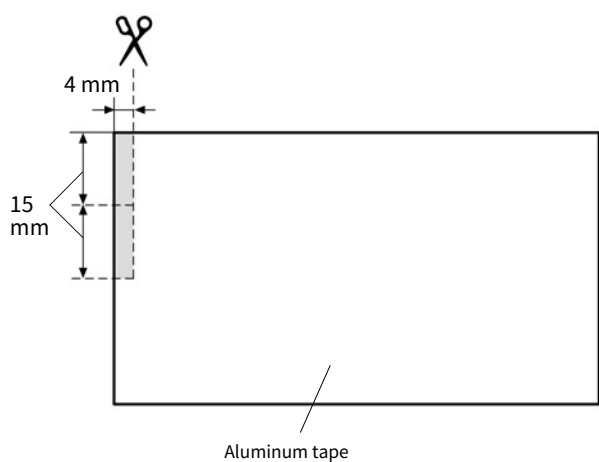
58. Secure harness C.



QK70430AH

light installation

59. Cut the aluminum tape.



QL21402AU

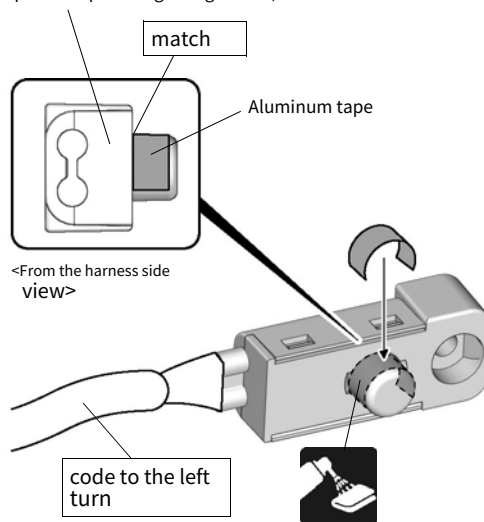
60. Affix aluminum tape.

アドバイス

- Always check the engraving.

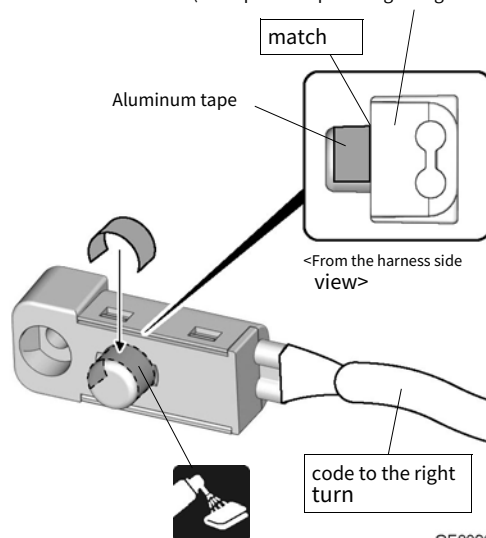
<left>

Light A
(Transparent tape or engraving: RED-L)



<Right side>

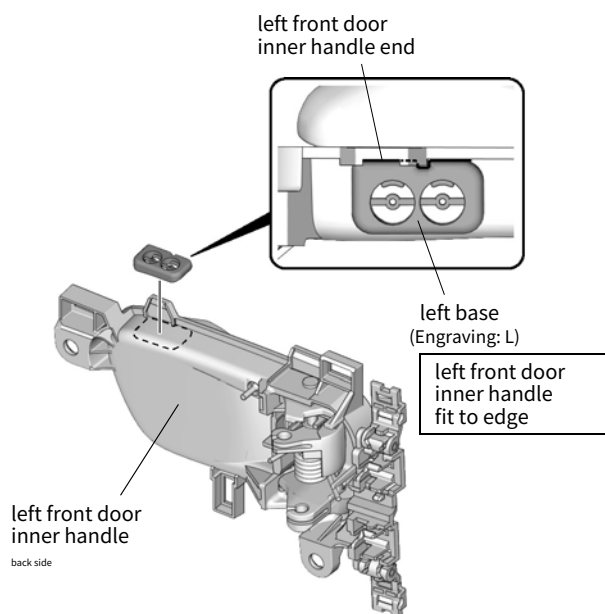
Light A
(Transparent tape or engraving: RED-L)



QF00905AT

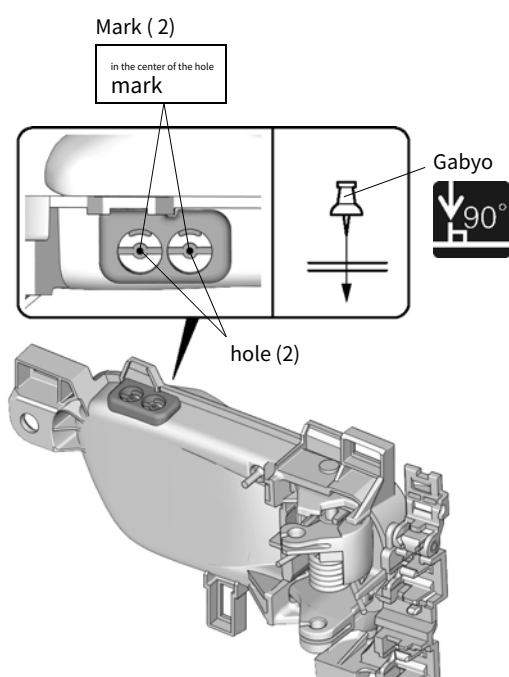
61. Align the left base.

<p>アドバイス</p> <ul style="list-style-type: none"> • Always check the engraving.



QK70431AH

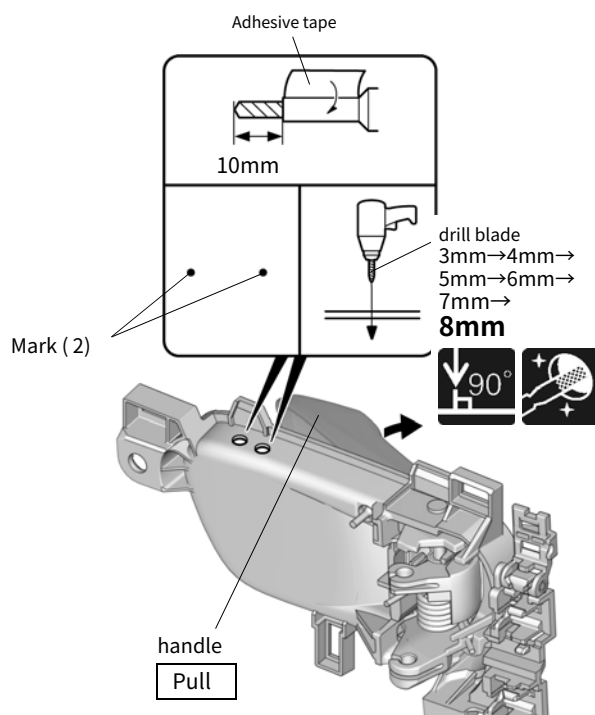
62. Mark the left front door inner handle.



QK70432AH

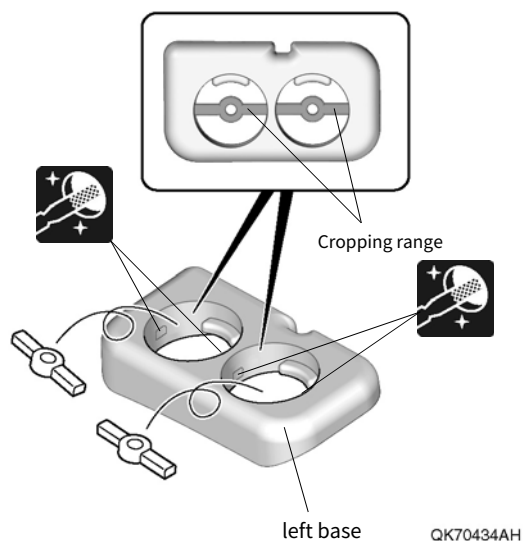
63. Remove the left base.

64. Drill a hole in the left front door inner handle.



QK70433BH

65. Cut left base.

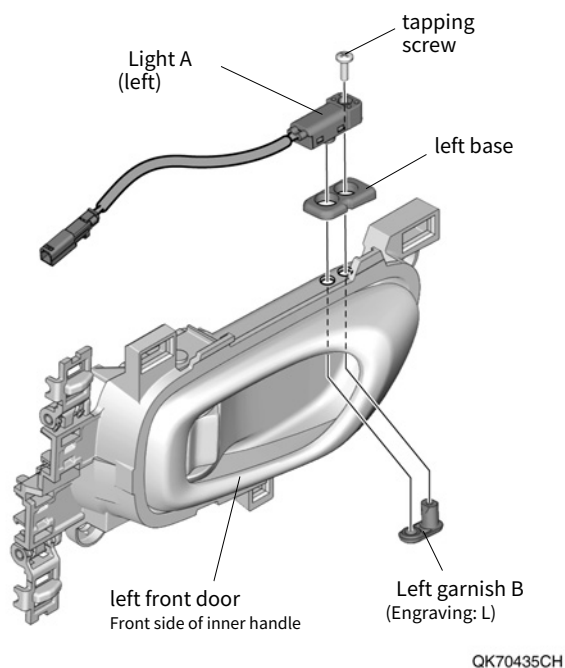


QK70434AH

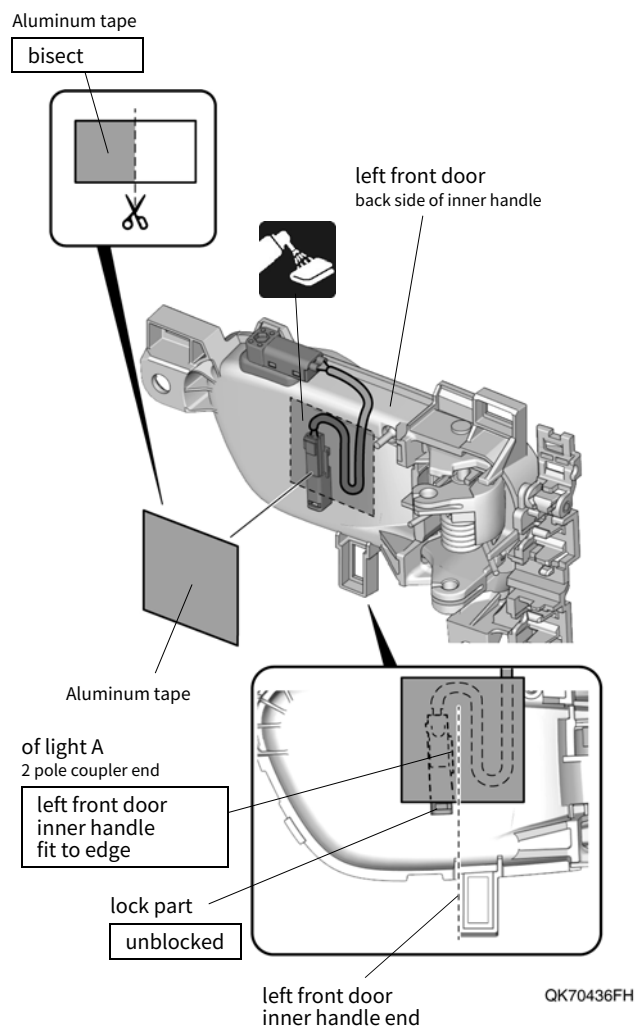
66. Install light A.

アドバイス

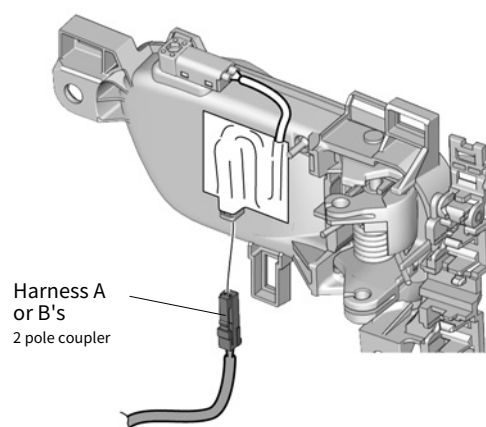
- Always check the engraving.



67. Secure the light A coupler.



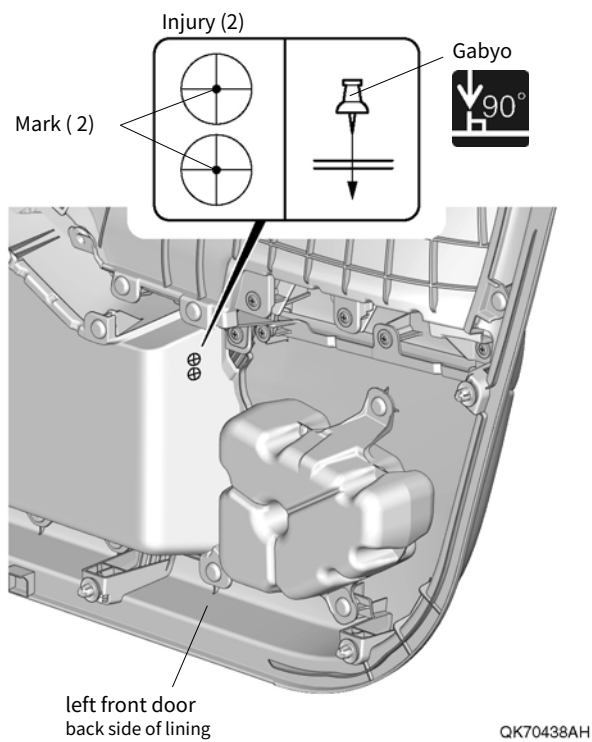
68. Connect the coupler of harness A or B.



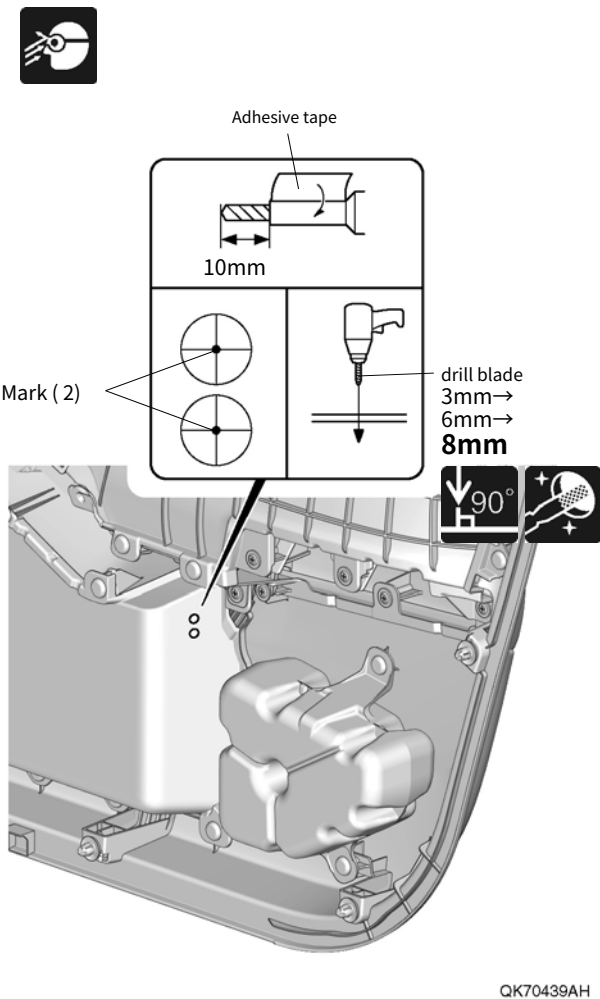
QK70437DH

69. Reinstall the left front door inner handle. wear.

70. Mark the left front door lining.

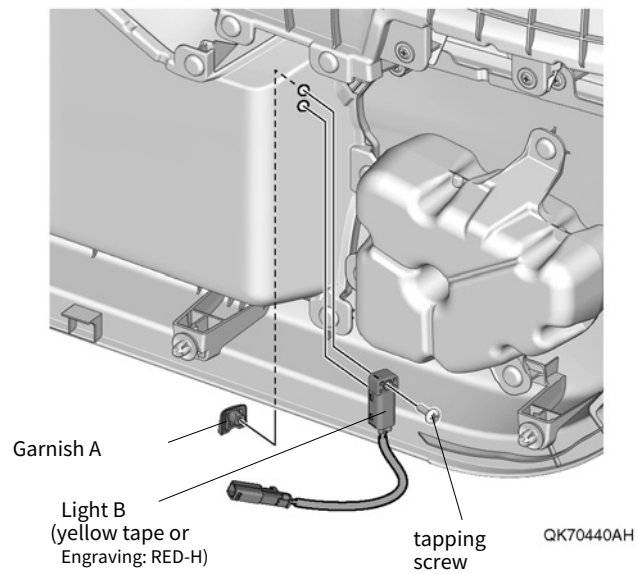


71. Drill a hole in the left front door lining.

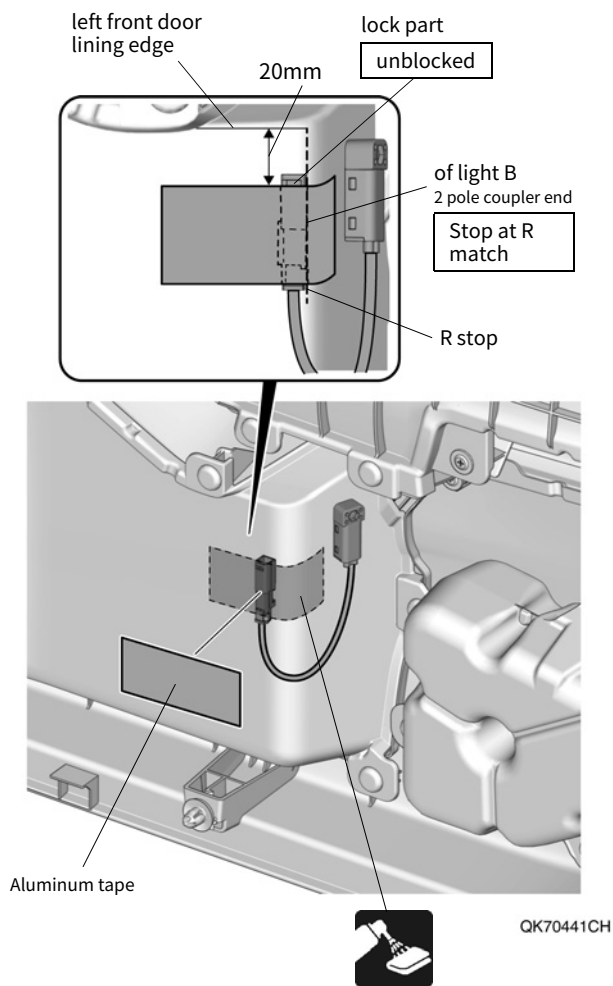


72. Install light B.

アドバイス
• Always check the engraving.

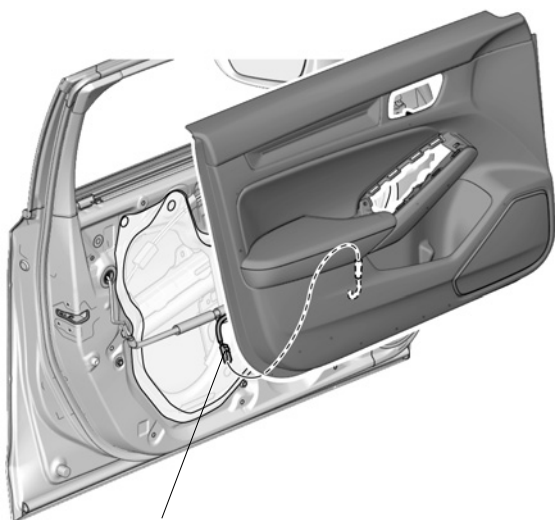
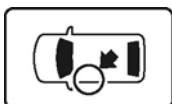


73. Secure the light B coupler.



74. Connect the coupler of harness A or B.

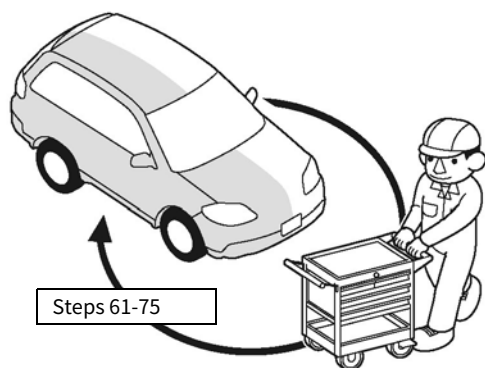
75. Reinstall the left front door lining
be.



Harness A or
B 2-pole coupler

QKD0504AU

76. Do the same for the other side.



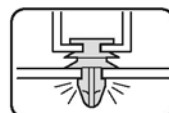
Q9D1014AM

Installation confirmation

77. Confirm that there is no abnormality in wiring and installation.

アドバイス

- Make sure that the harness is not forcibly pushed, pulled or caught.
- Make sure that the clamps and bands have not come off and that they have not been tightened.



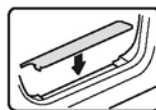
Q060706CM

Restoration work

78. Reinstall the removed vehicle parts.

アドバイス

- Be careful not to damage vehicle parts or trap harnesses.
- Securely attach clips, claws, etc. so that there are no gaps.



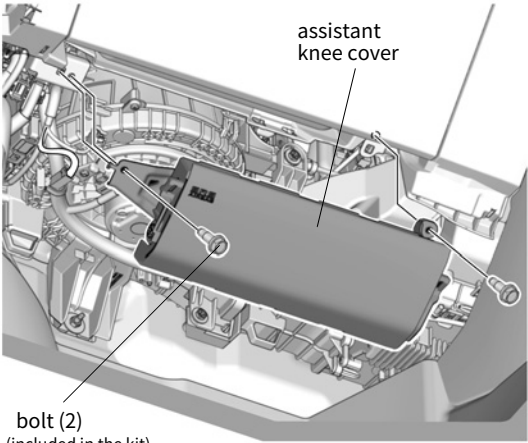
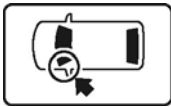
Q060703CM

<Attaching the assistant knee cover>

79. Refit the assistant knee cover.

アドバイス

- Be sure to replace the bolts as they cannot be reused.

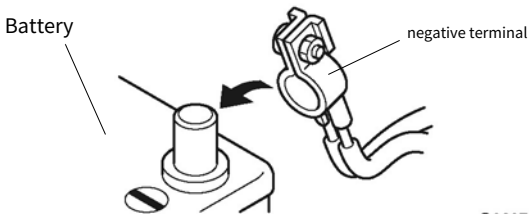


6.9 to 14.4N • m
(0.7 to 1.5 kgf • m)

QKD0505AU

Operation confirmation

80. Connect the negative (-) terminal of the battery.



Q060702BM

81. Turn on the engine switch (POWER switch)

After that, the SRS warning light lights up for 6 seconds, and then

Make sure it goes off.

82. If necessary, enter the navigation security code do.

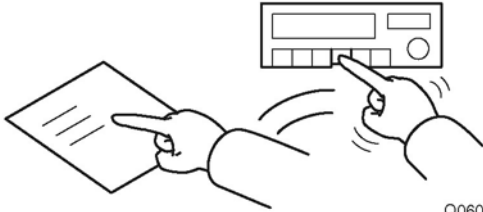
83. Inner door handle & door pocket illumination

Check operation by referring to the user's manual for the device.

Vehicle confirmation

84. Electrical accessories and electrical systems working properly make sure that

85. Check the positions of the memory and knobs of each device before installation. return to state.



Q060704BM

<Inspection/Various registration/learning>

86. Perform learning work associated with removing the battery.

アドバイス

- Perform the work referring to the service manual.

Give the customer the following: when

- operating instructions