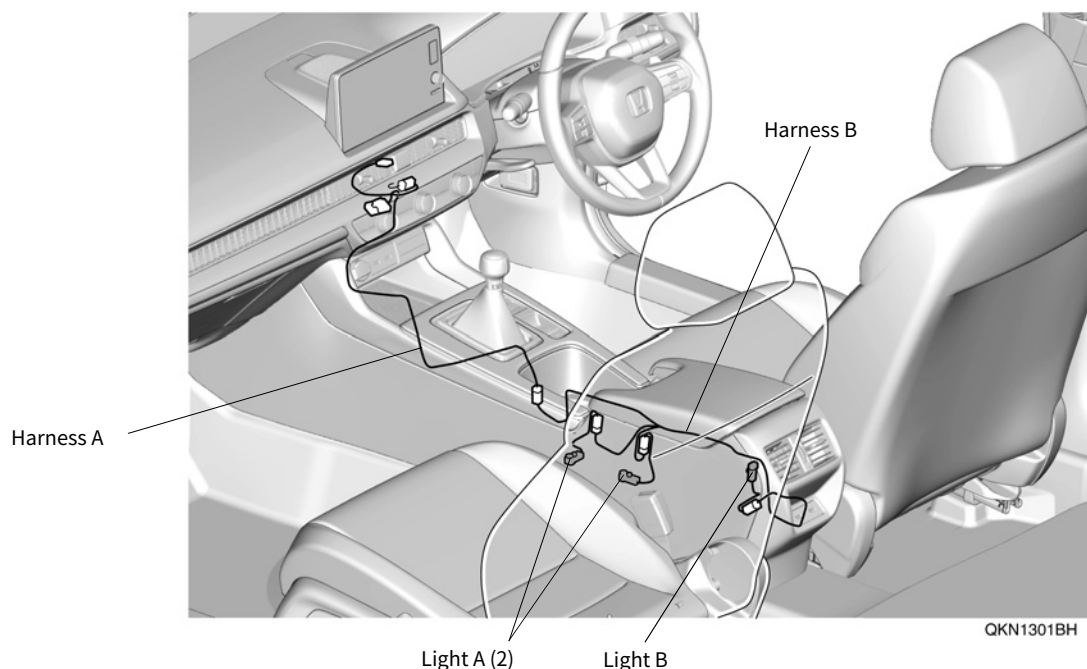


center console box & Drink holder illumination (for 6MT vehicles)

CIVIC

Installation outline drawing



For Safe Installation (Be sure to read)

About caution marks

- In this manual, the following symbols are used to explain the possibility of injury to workers and other people, and to give advice on installation.

⚠ 危険

指示に従わないと、死亡または重大な傷害に至るもの

⚠ 警告

指示に従わないと、死亡または重大な傷害に至る可能性があるもの

⚠ 注意

指示に従わないと、傷害をうける可能性があるもの

アドバイス

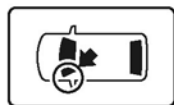
故障、破損するのを防ぐためのアドバイスや、知っておくと便利なこと



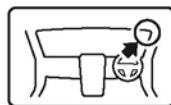
禁止事項

About icons

- 作業する場所と作業者の目線を下記のアイコンを使って表示します。



車両に対しての場所



インストルメントパネル付近に対しての場所

- 作業中に必ず守っていただくことを下記のアイコンを使って表示します。



保護めがねを着用する



革手袋を着用する



二人作業を行う



部品を段ボールまたは毛布の上に置く



バリを取り除く



タッチアップ ペイントを塗布し、十分に乾燥させる



部品を保管(お客様へ返却)する



貼り付け面を十分に圧着する



指定トルクで締め付ける

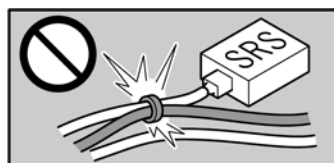


面に対して垂直に作業を行う



脱脂洗浄剤で清掃する

Wire Harness Handling Precautions



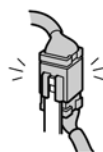
用品ハーネスとSRSハーネスを一緒にクランプしないこと。(指示がある場合を除く)



カブラ、端子の接続は、確実にロックするまで差し込むこと。



カブラ、端子類の接続を外す時は、ハーネスを引っ張らないこと。



ステー等から取り外したカブラは必ず元に戻すこと。



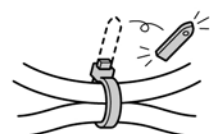
ハーネス類は強く引っ張らないこと。



用品ハーネスは、垂れ下がらないよう指定された場所にクランプすること。



ハーネス類は部品にかみ込ませないこと。



ハーネス バンドの余った部分は、カットすること。

General note

- Follow the maintenance information and related items in the service manual in addition to the instructions in the installation manual.
Pay particular attention to safety.
- Do not scratch or damage the vehicle body and parts.
- Pay particular attention to clips and claws.
- Considering the time of restoration, check the installation condition before removing vehicle parts.
- Illustrations may differ slightly due to vehicle design changes.

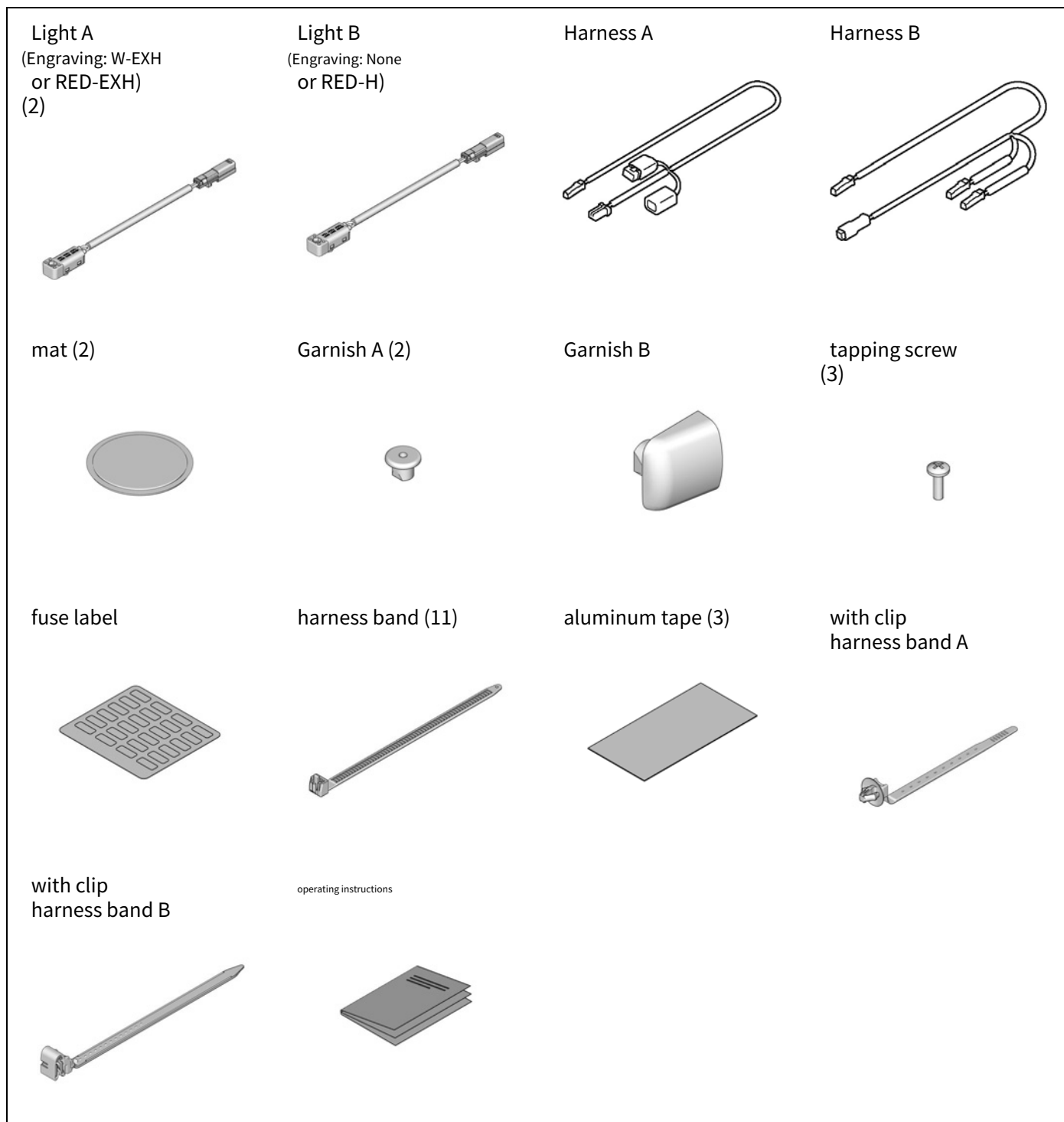
Notes on electrical components

- Never perform installation work with the negative (-) terminal of the battery connected. .

Precautions regarding this product

- **Be sure to use parts specified in this manual for bolts, screws, etc. Carelessly using similar parts may cause problems.**
- **Do not install or paste the product in a place exposed to direct sunlight or dust.**
- Keep the temperature of the surface to be attached between 15 and 40°C during the attachment work.
- Especially at low temperatures, the adhesiveness of tapes and films may decrease, so warm the surface to be attached before attaching.
- Apply sufficient pressure while being careful not to damage the supplies and vehicle parts.
- Be careful not to reattach it. Reattaching the tape may damage it or prevent the performance of the tape or film from being fully exhibited.

Center console box & drink holder illumination



Required tools/instruments

- Spanner
- Ratchet
- Adhesive tape
- Masking tape
- Drill
- Gabyo
- Phillips screwdriver
- Socket
- Waste cloth
- Scissors
- drill bit
- Torque Wrench
- Nippers
- rasp
- Degreasing agent (Honda genuine product)
- Ruler
- Safety glasses
- Handy remover set
(KTC ATP2014) equivalent

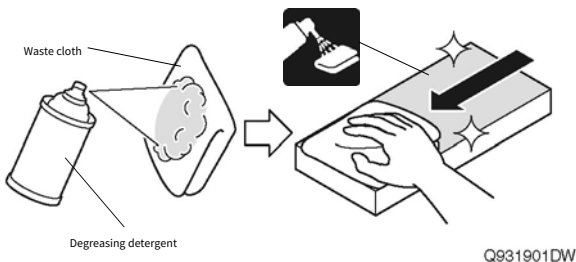
Mounting method and procedure

Cleaning method with degreasing detergent

- Soak a rag in degreasing detergent and wipe off oil, dust, dirt, etc. from the surface to be attached.

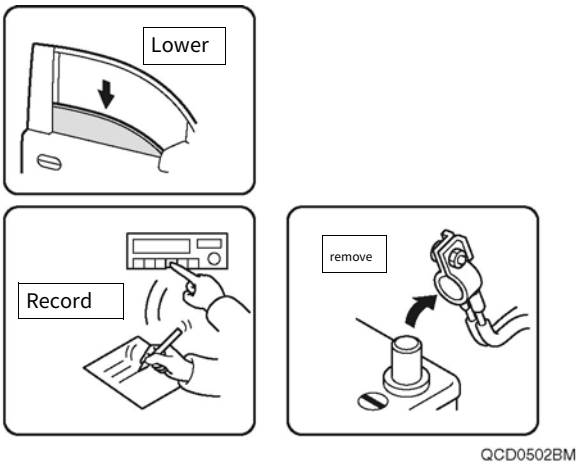
アドバイス

- Always use genuine Honda degreasing agents.
- Do not apply degreasing detergent directly to the application surface.
- Allow to dry thoroughly before pasting.



battery negative (-) terminal removal

1. Perform work before disconnecting the battery.
2. Audio, navigation, etc. as needed
Record some settings.
3. Disconnect the negative (-) terminal of the battery.

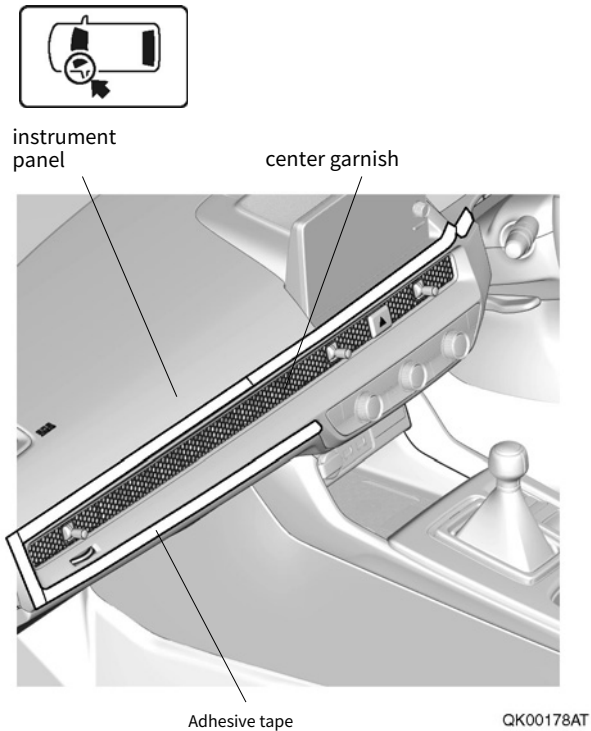


Removal of vehicle parts

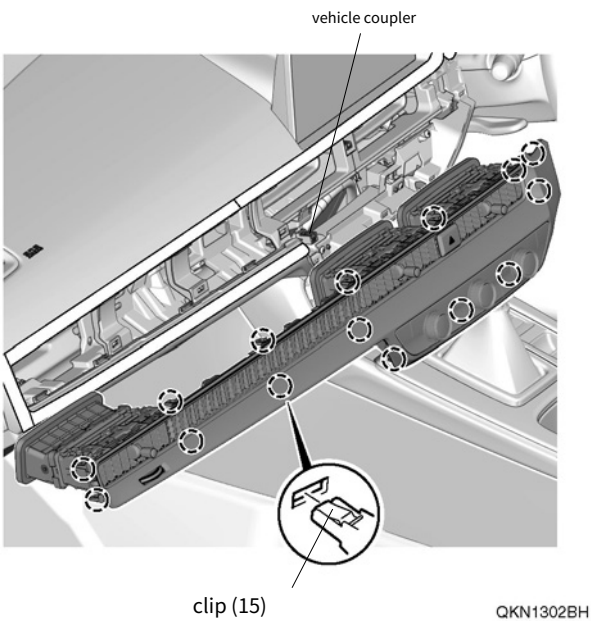
Four. Adhesive tape is applied to protect the vehicle.

アドバイス

- Do not remove the adhesive tape until the restoration work is completed.



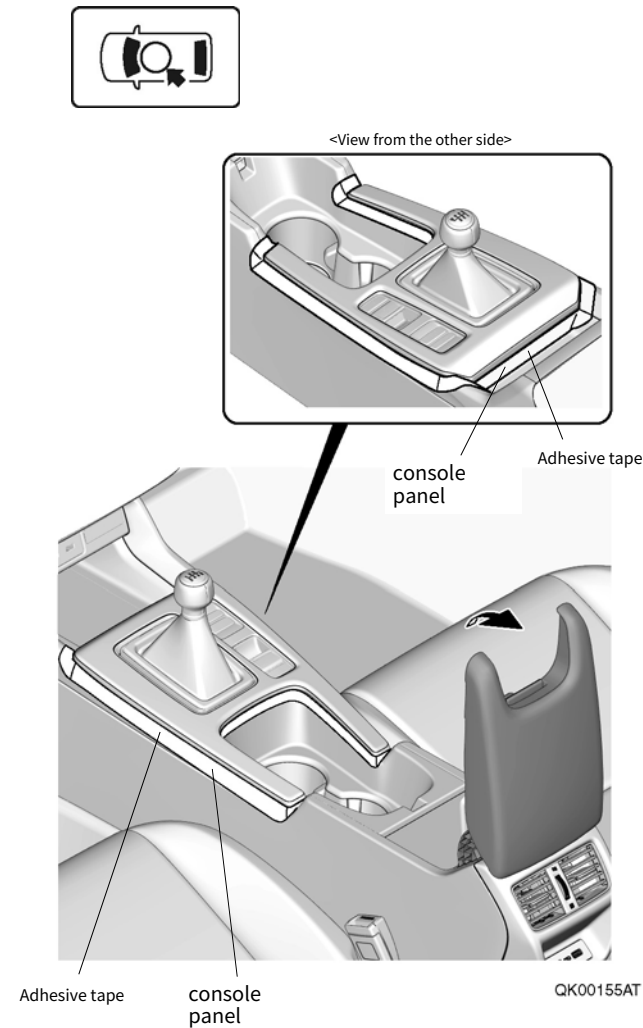
Five. Remove the center garnish.



6. Adhesive tape is applied to protect the vehicle.

アドバイス

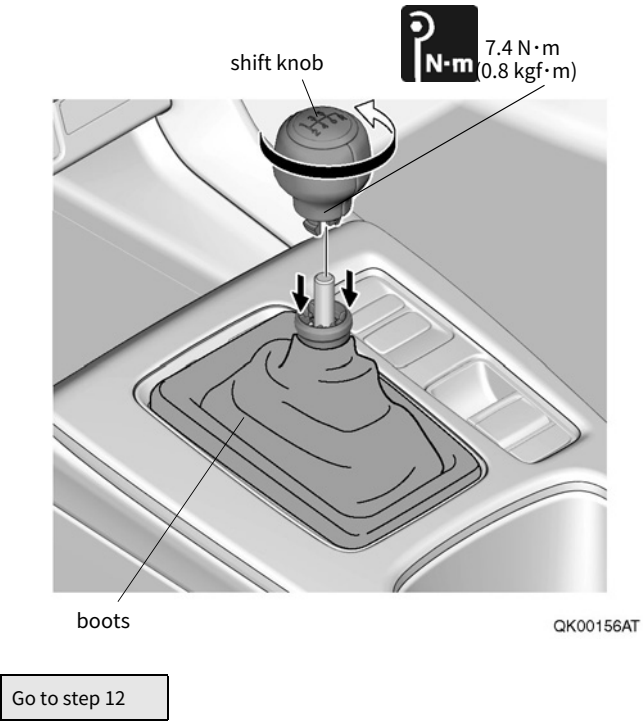
• Do not remove the adhesive tape until the restoration work is completed.



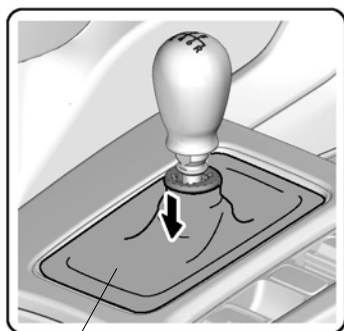
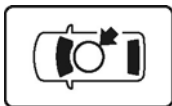
7. Follow the instructions below.

• Shift knob		
Resin type		Go to step 8
Aluminum type		Go to step 9

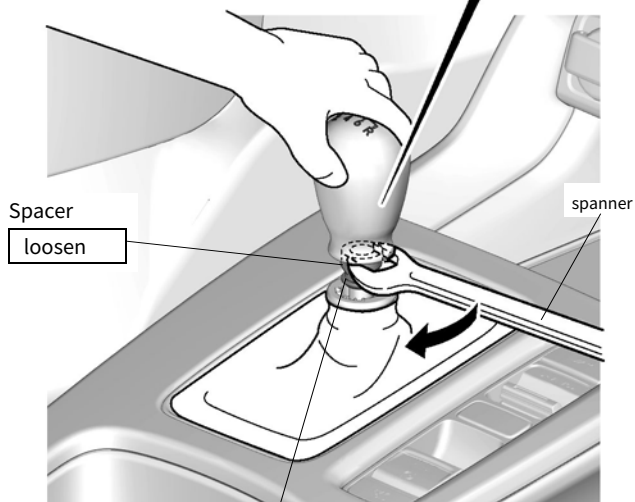
8. Remove the shift knob.



9. Lower your boots.
- Ten. Loosen the spacer.



boots



Spacer

loosen

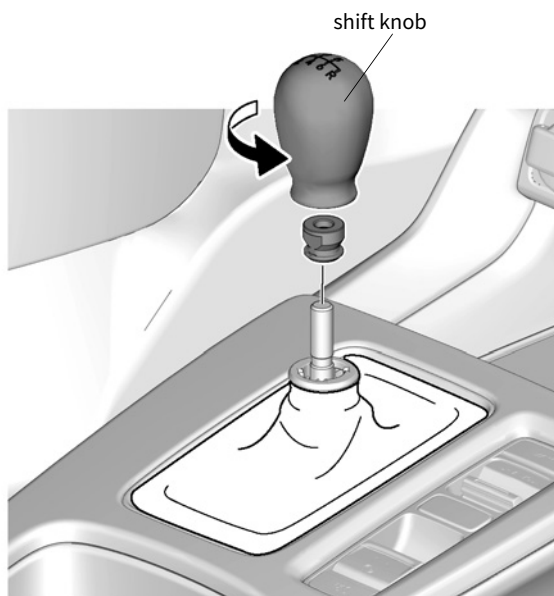
spanner



8.4 N·m
0.9 kgf·m

QM10102AT

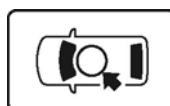
11. Remove shift knob and spacer.



shift knob

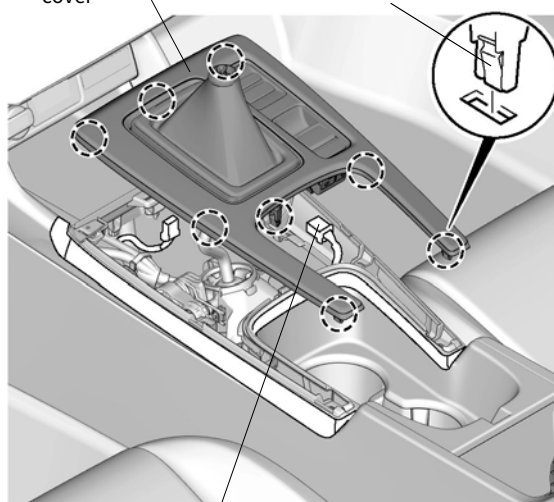
QM11701AH

12. Remove the escutcheon cover.



escutcheon
cover

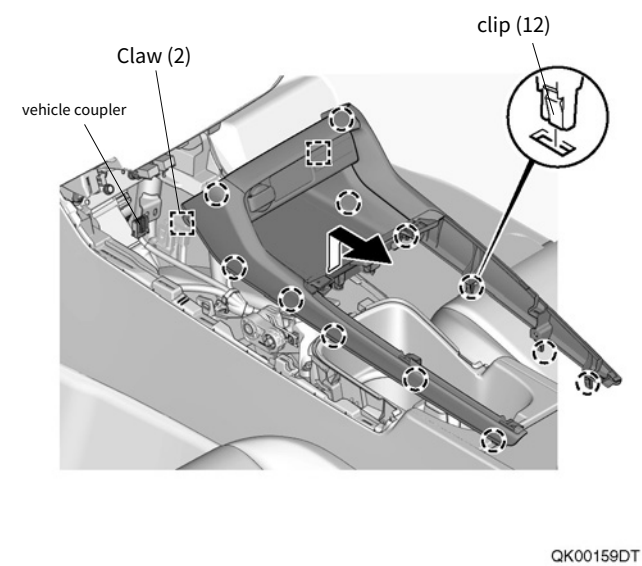
clip (8)



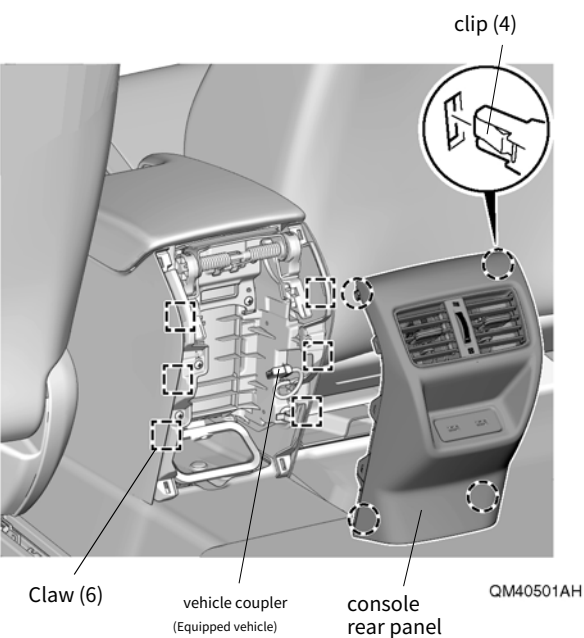
vehicle coupler

QK00157AT

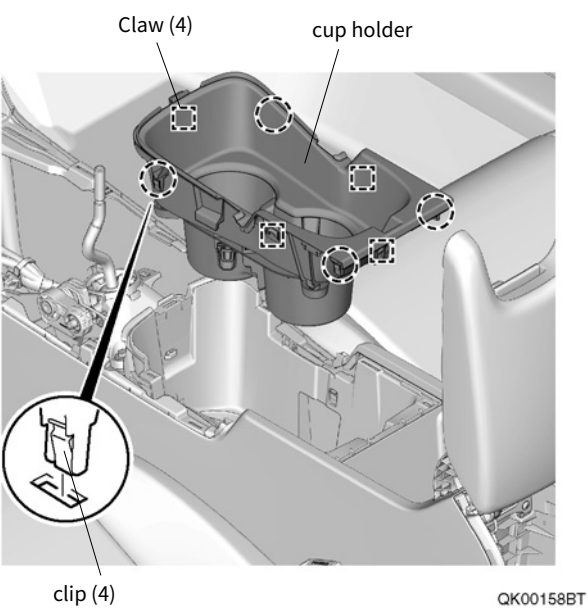
13. Remove the console panel.



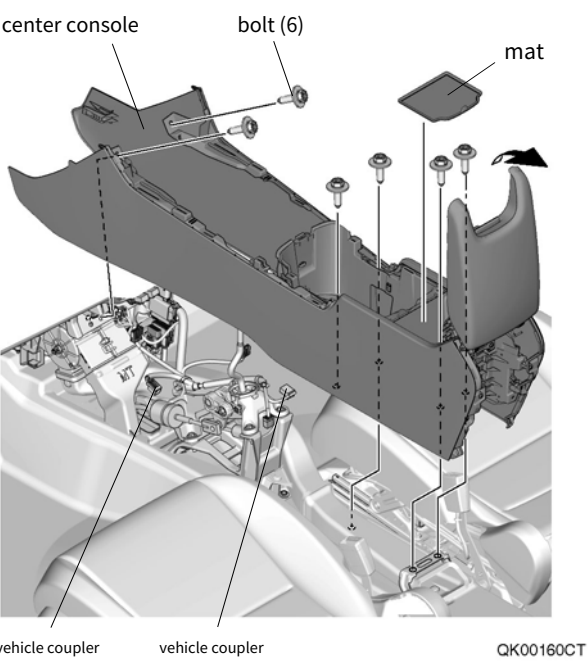
14. Remove the console rear panel.



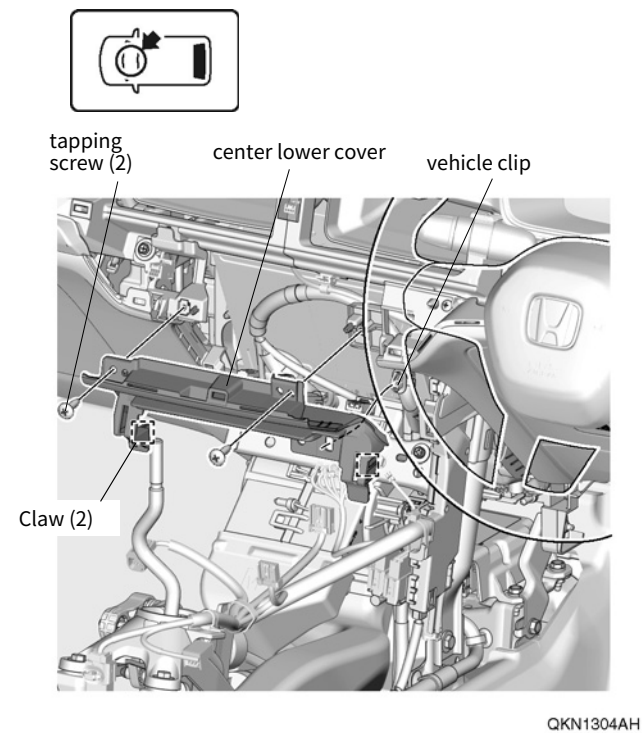
15. Remove the cup holder.



16. Remove the center console.

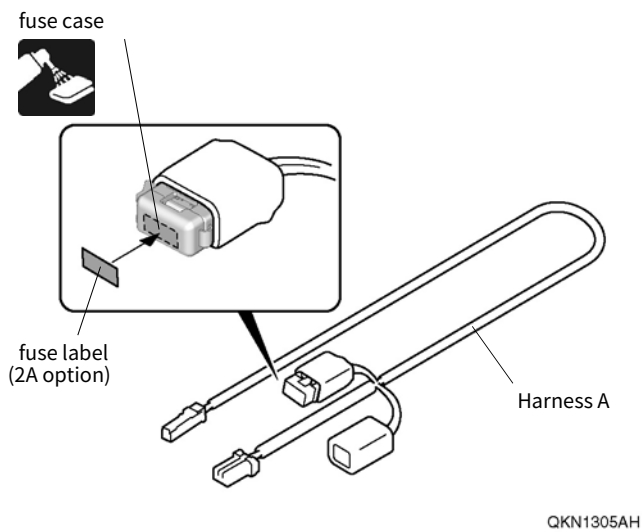


17. Remove the center lower cover.

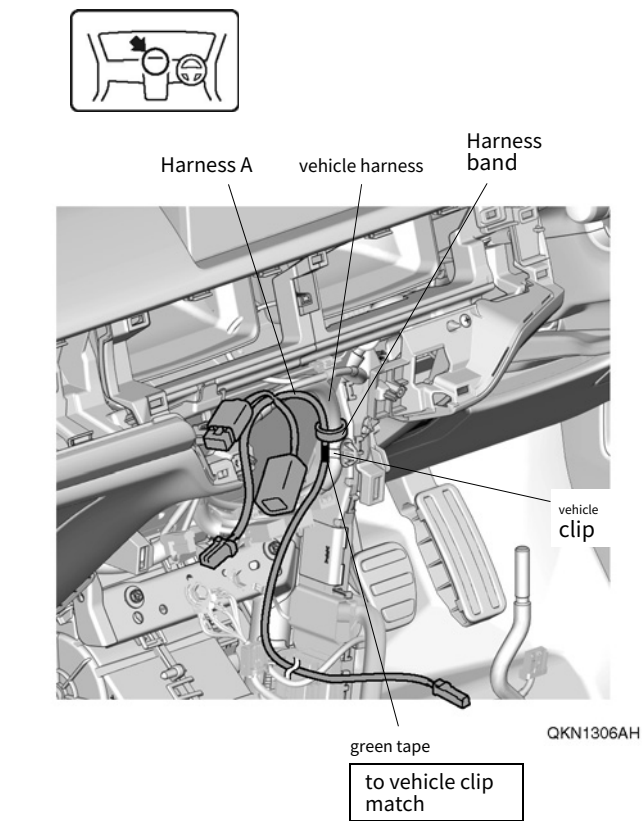


Wire of harness A

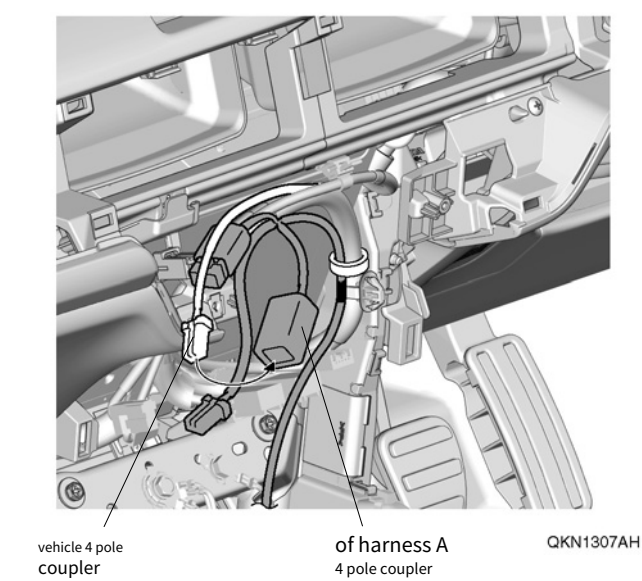
18. Affix the fuse label.



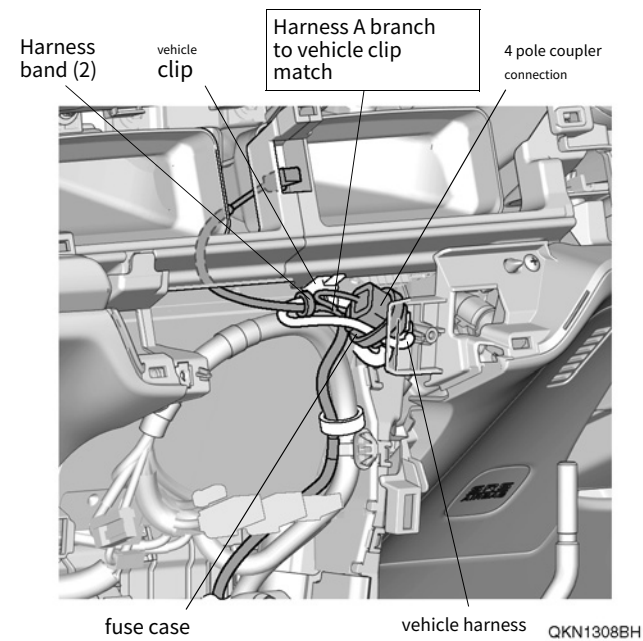
19. Secure harness A.



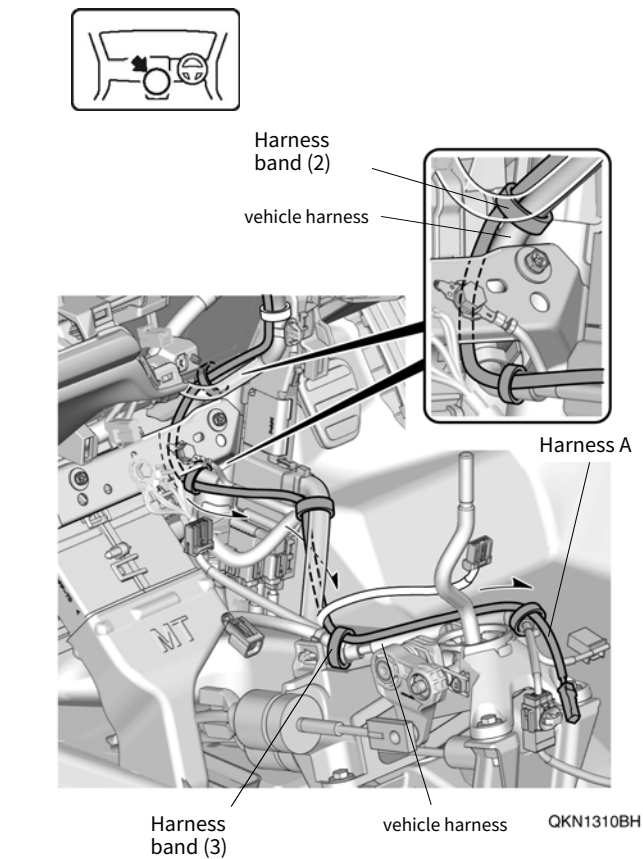
20. Connect the vehicle coupler.



twenty one. Secure the harness A, the fuse case and the coupler connection.
set.

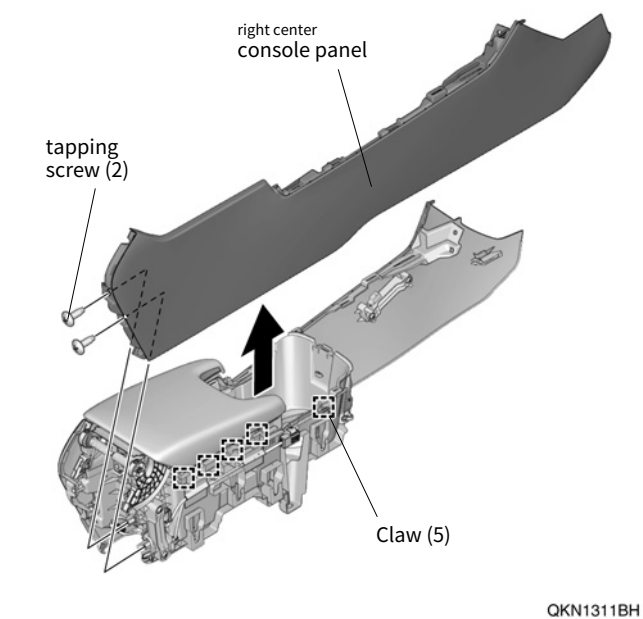


twenty two. Secure harness A.

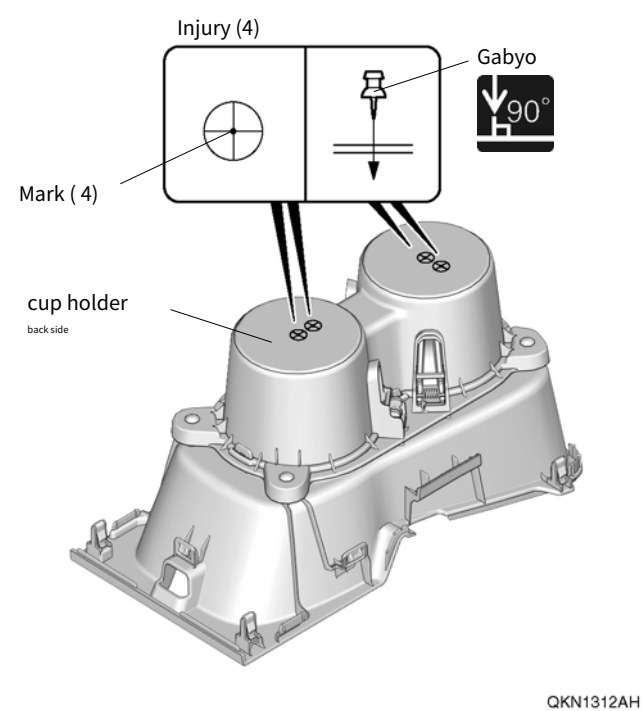


Light installation and wiring of harness B

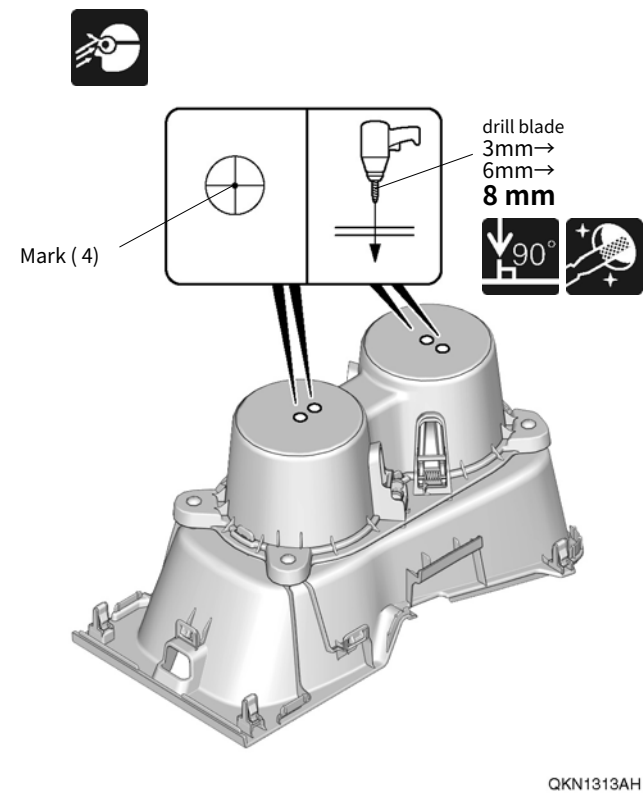
twenty three. Remove the right center console panel.



twenty four. Mark the cup holder.

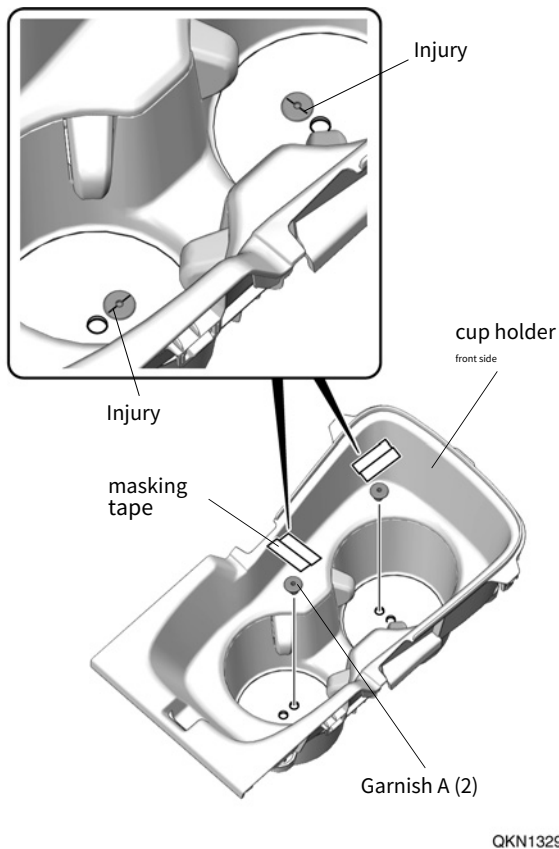


twenty five. Drill a hole in the cup holder.



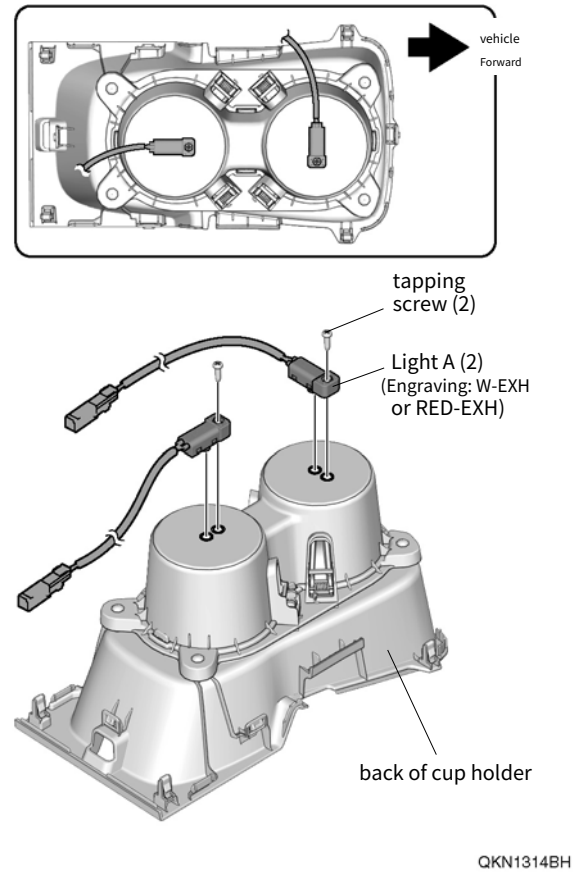
26. Temporarily fix garnish A.

アドバイス
• Pay attention to the orientation of the garnish.



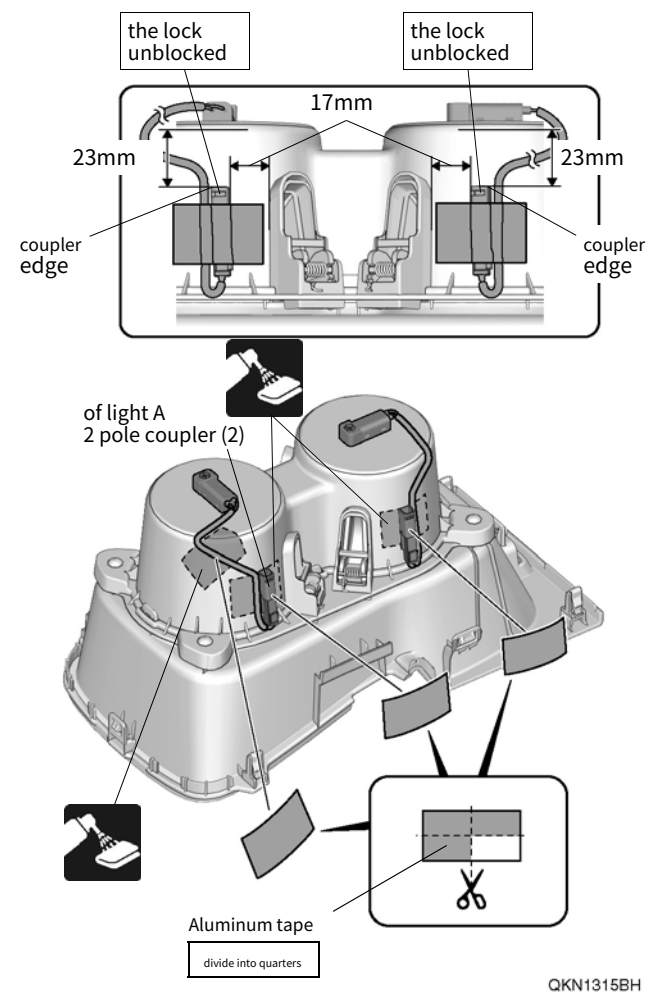
27. Install light A.

アドバイス
• Pay attention to the orientation of the lights.

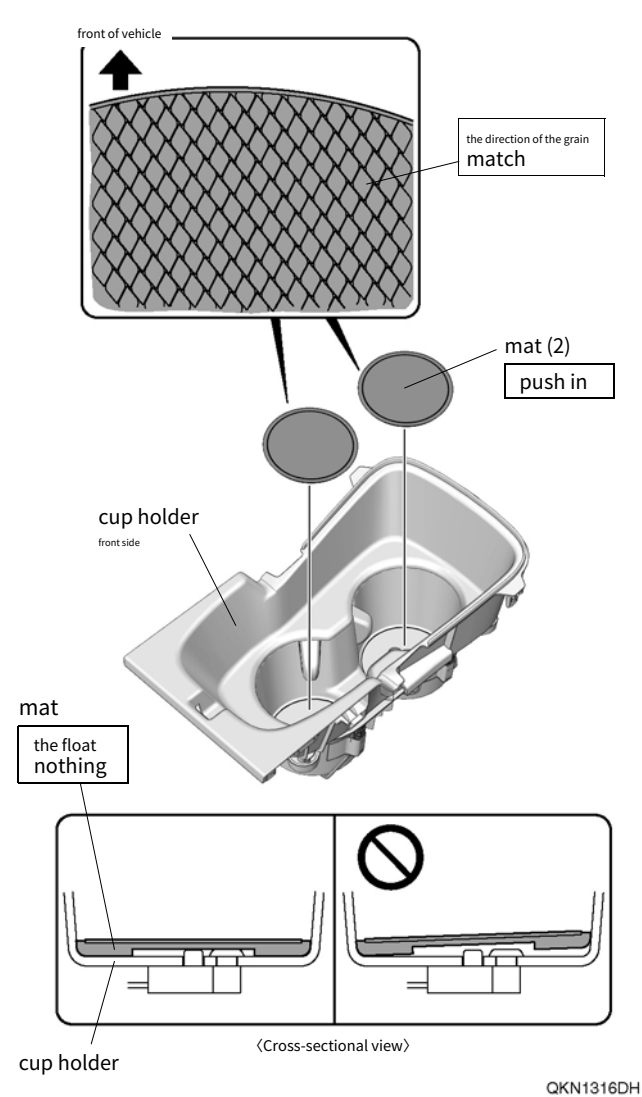


28. Remove the masking tape.

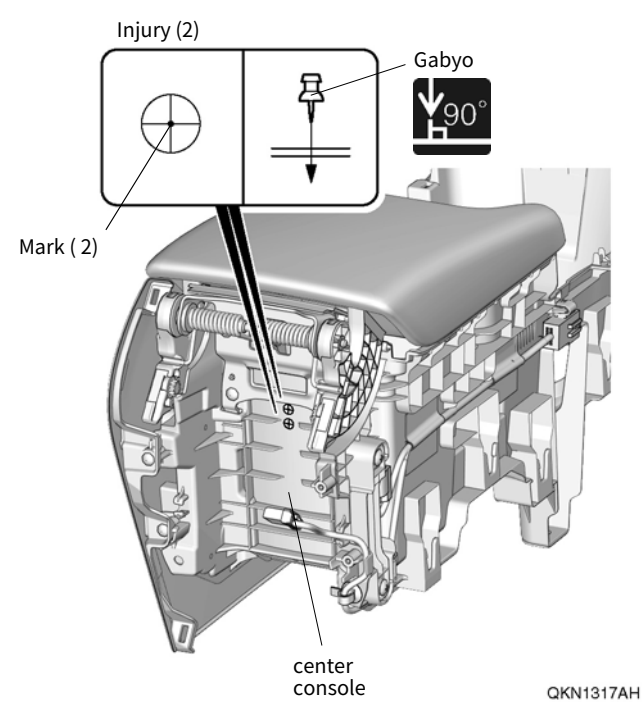
29. Secure the light A coupler.



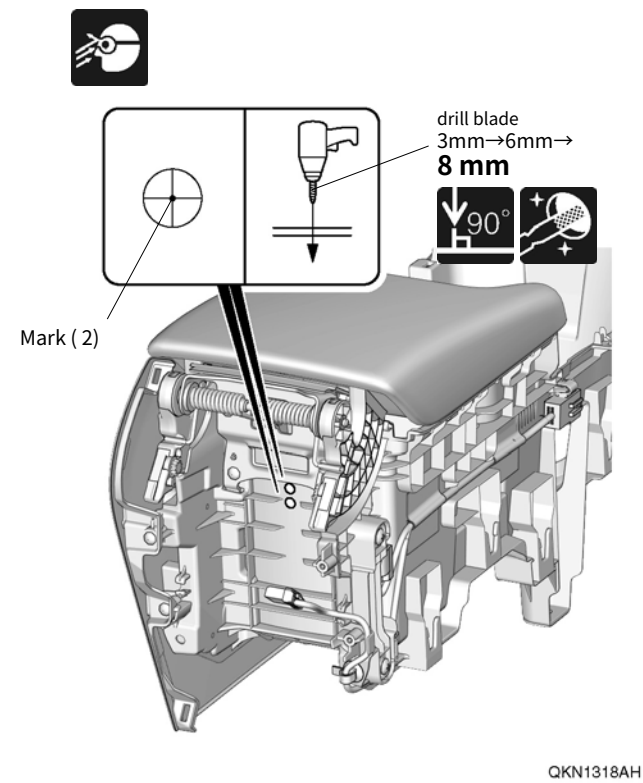
30. Install mat.



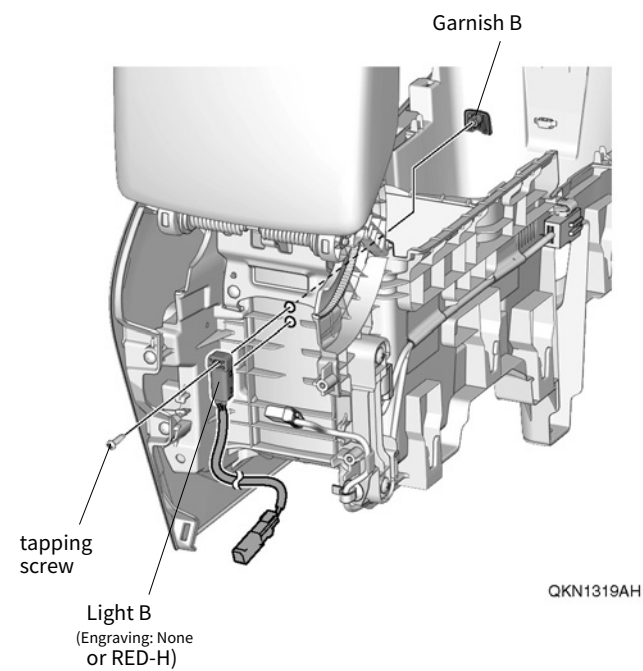
31. Mark the center console.



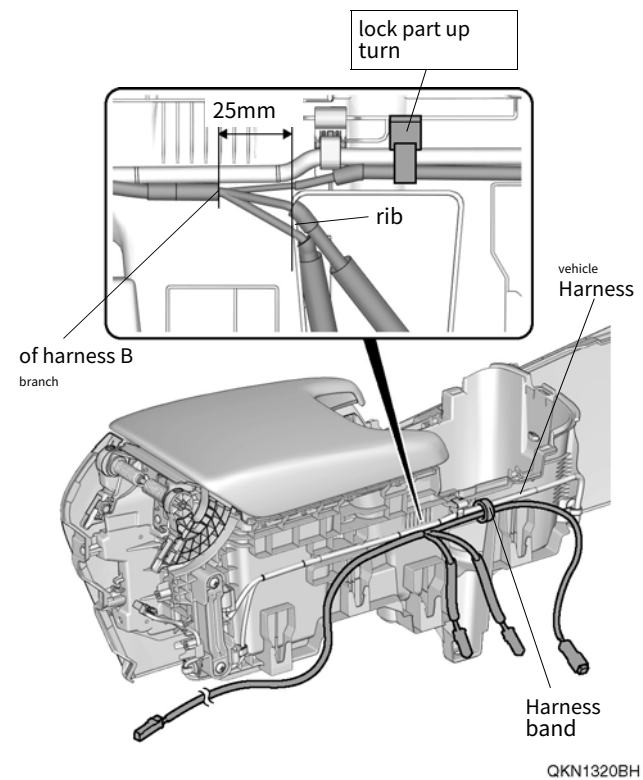
32. Drill a hole in the center console.



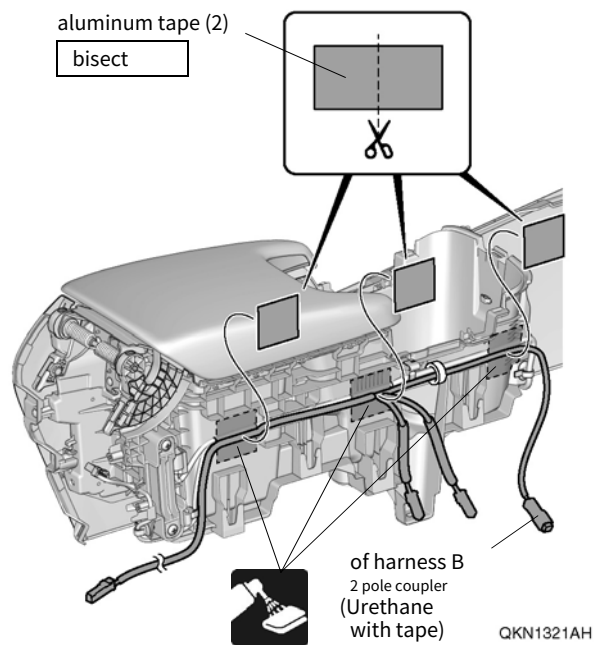
33. Install light B.



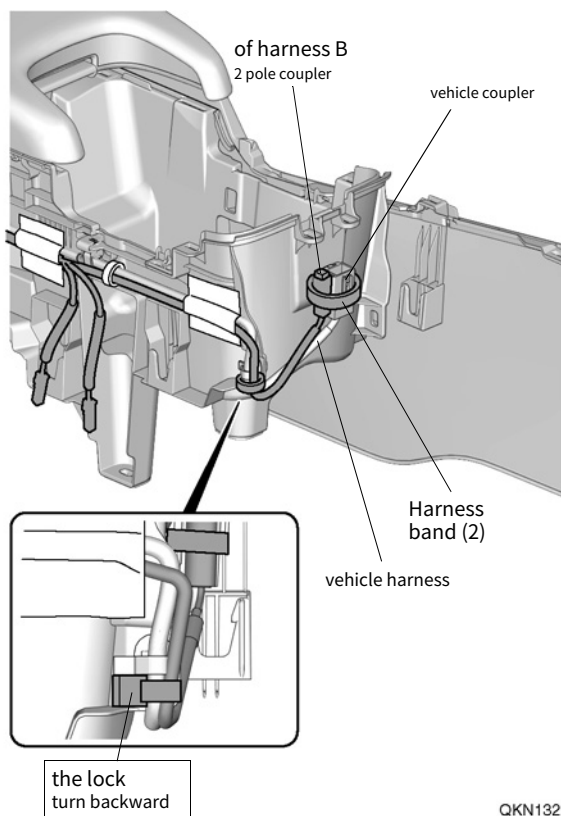
34. Secure harness B.



35. Secure harness B.

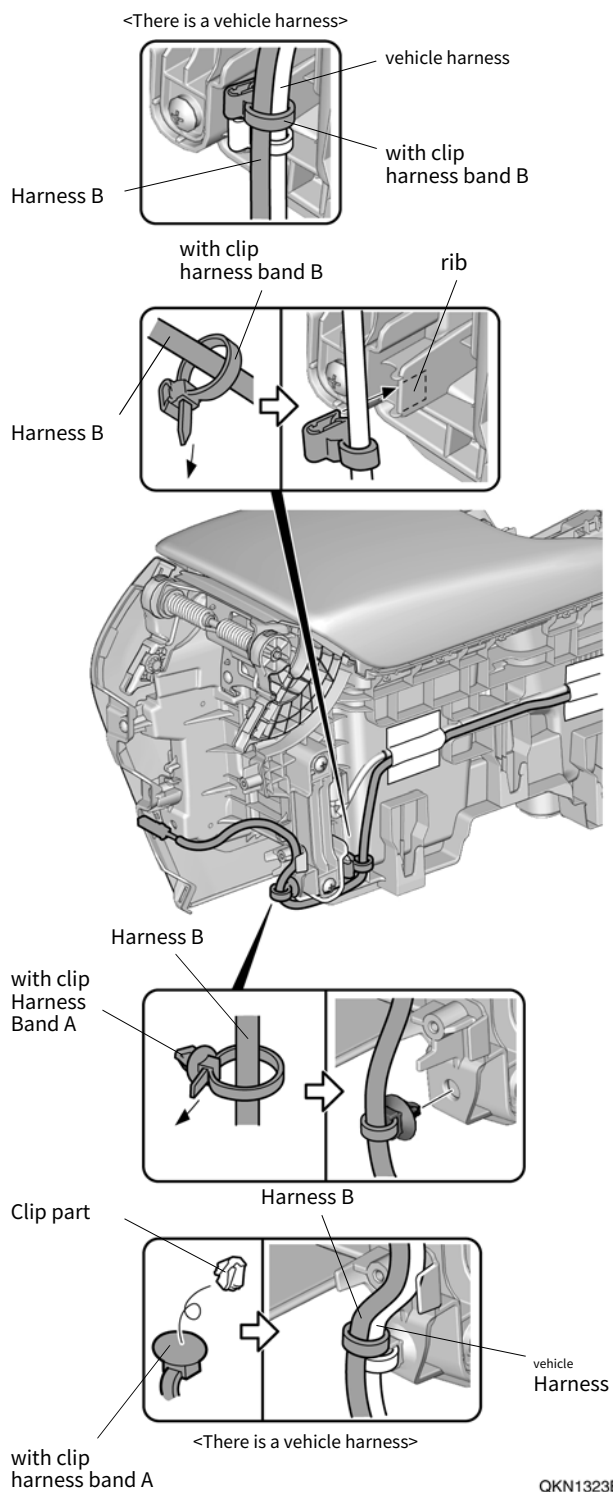


36. Secure harness B.



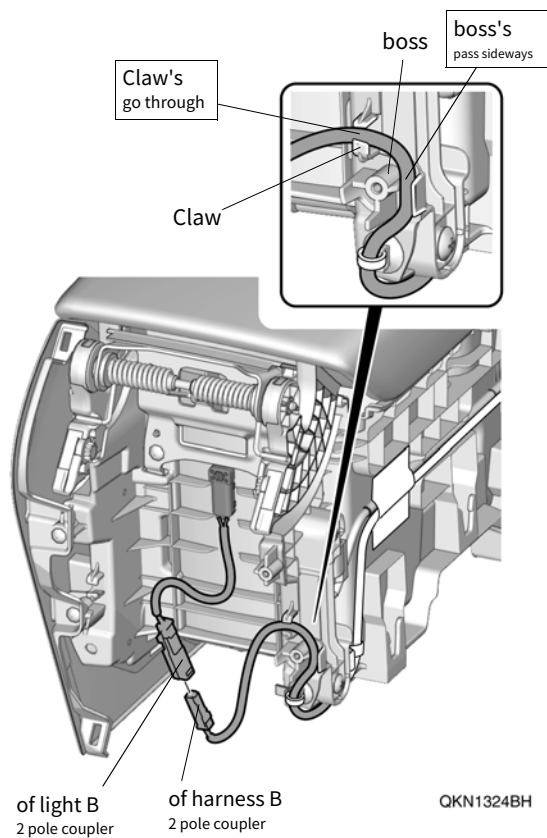
QKN1322BH

37. Secure harness B.

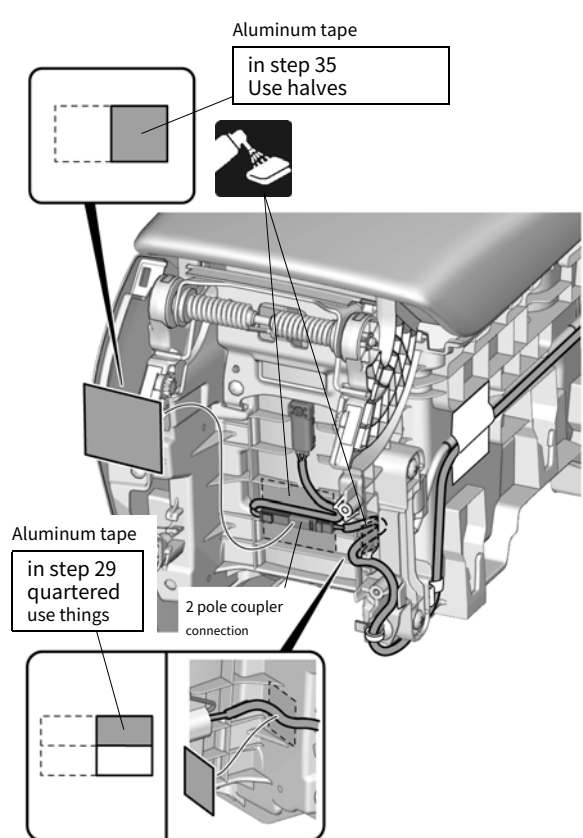


QKN1323BH

38. Connect the coupler of harness B.



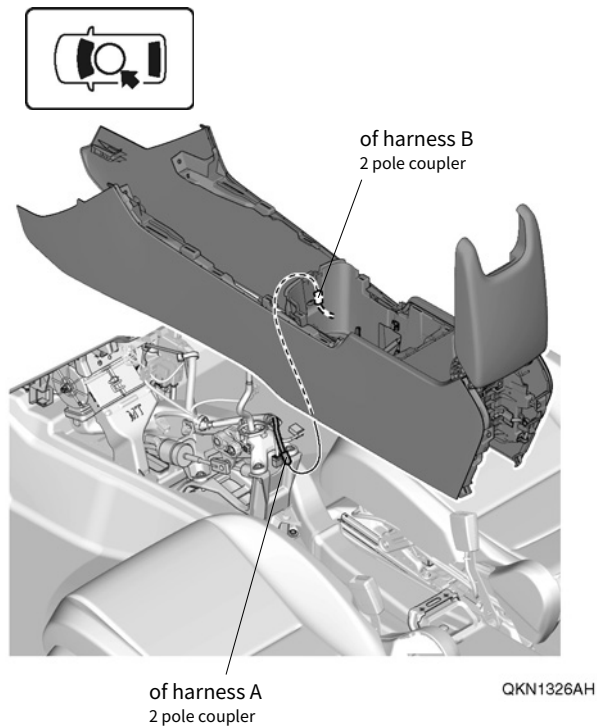
39. Secure the harness B and the coupler connection.



40. Reinstall the right center console panel
be.

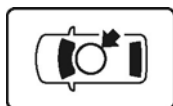
41. Reinstall the center lower cover. 42. Connect
the harness A coupler.

43. Reinstall the center console.

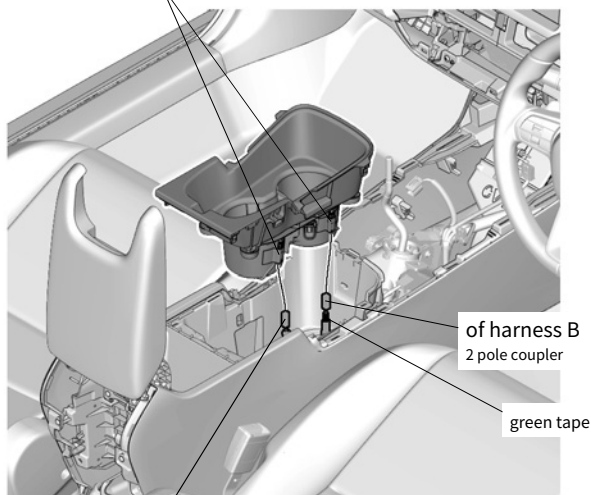


44. Connect the coupler of harness B.

45. Reinstall the cup holder.



of light A
2 pole coupler (2)



of harness B
2 pole coupler

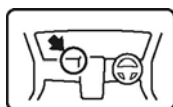
green tape

of harness B
2 pole coupler

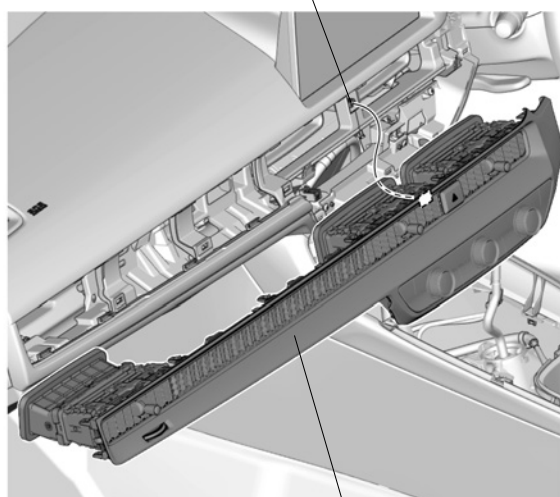
QKN1327AH

46. Connect the harness A coupler.

47. Reinstall the center garnish.



of harness A
4 pole coupler



center
garnish

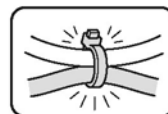
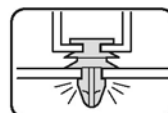
QKN1328CH

Installation confirmation

48. Confirm that there is no abnormality in wiring and installation.

アドバイス

- Make sure that the harness is not forcibly pushed, pulled or caught.
- Make sure that the clamps and bands have not come off and that they have not been tightened.



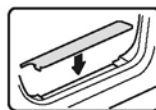
Q060706CM

Restoration work

49. Reinstall the removed vehicle parts.

アドバイス

- Be careful not to damage vehicle parts or trap harnesses.
- Securely attach clips, claws, etc. so that there are no gaps.

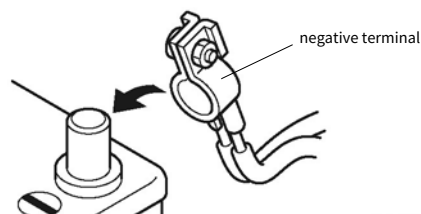


Q060703CM

Operation confirmation

50. Connect the negative (-) terminal of the battery.

Battery



negative terminal

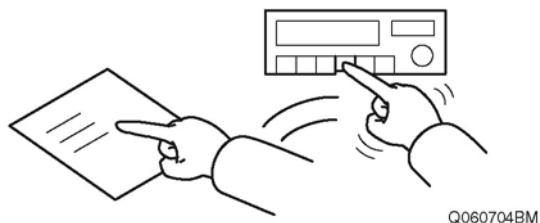
Q060702BM

51. If necessary, enter the navigation security code do.

52. Check the operation by referring to the instruction manual.

53. Electrical accessories and electrical systems working properly
make sure that

54. Check the positions of the memory and knobs of each device before installation.
return to state.



〈Inspection/Various registration/learning〉

55. Perform learning work associated with removing the battery.

アドバイス

- Perform the work referring to the service manual.

Give the customer the following:
when

- operating instructions