



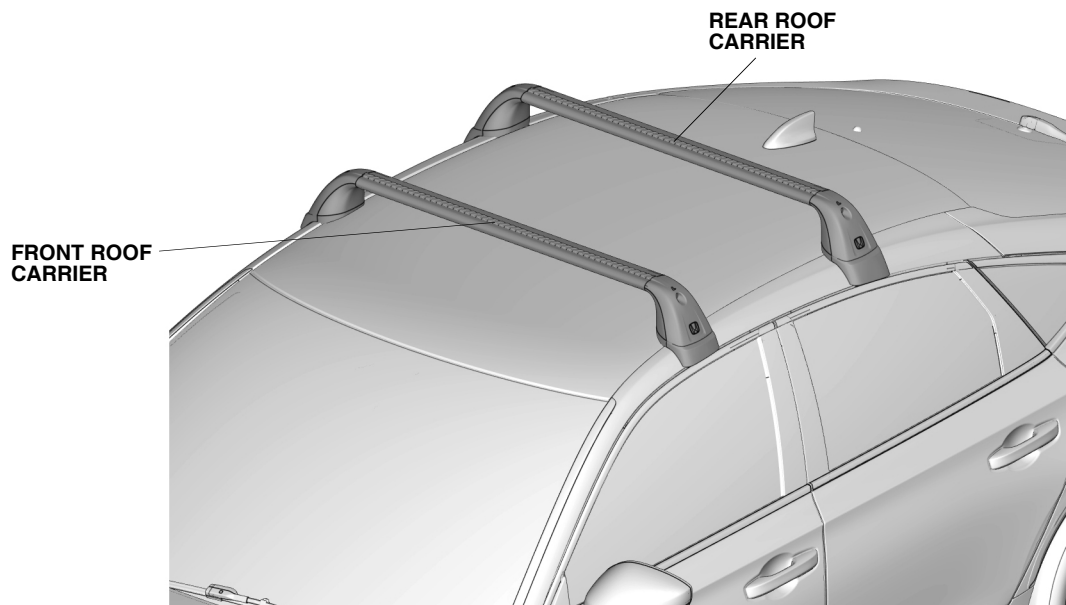
## INSTALLATION INSTRUCTIONS

Accessory  
ROOF CARRIER

Application  
2022 CIVIC  
5-DOOR

Publications No.  
**VERSION 1**  
Issue Date  
**SEP 2021**

### GENERAL VIEW



QL12801AJ

### FOR YOUR SAFETY (Read carefully.)

#### Warning Symbols

**Safety:** Your safety, and the safety of others, is important. To help you make informed decisions about service procedures, we have provided safety messages where appropriate. Of course, it is not practical or possible to warn you about all the hazards associated with servicing a vehicle - you must use your own good judgment.

You will find important safety messages preceded by one of following symbols:

\*All symbols are not used in all installation instructions.



#### **DANGER**

You will be killed or seriously hurt if you do not follow the instructions.



#### **WARNING**

You can be killed or seriously hurt if you do not follow the instructions.



#### **CAUTION**

You can be hurt if you do not follow the instructions.

#### **NOTICE**

Gives advice to prevent damage to the product, vehicle, the environment or other property.

#### **NOTE**

Gives helpful information or instructions to be followed when installing this product.

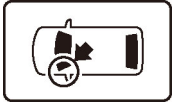


Indicates a prohibited action.

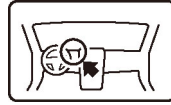
## Procedure and Location Icons

These icons indicate the work location and the worker's point of view.

\*All icons are not used in all installation instructions.



The location on the vehicle.



The location in the vehicle.  
(instrument panel.)



Wear eye protection.



Wear heavy gloves.



Use an assistant.



Place the part on a blanket.



Work perpendicular.



Remove any burrs.



Use touch-up paint and allow to dry.



Tighten to the specified torque.



Apply firm pressure while rolling, especially at the ends, to set the adhesive.



Press firmly.



Clean with isopropyl alcohol.



Return the original part to the customer.  
(Do not reuse.)

## Safety: General



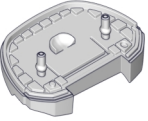
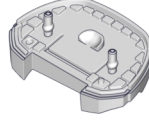
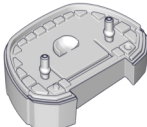
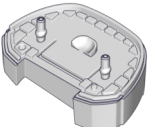
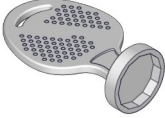
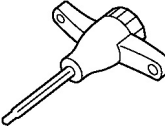

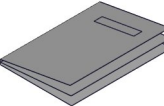
- Be careful not to damage the vehicle or the parts.
- The illustrations may differ slightly from the actual accessory.

## Safety: Accessory

Always use the parts and tools specified in the installation instructions.

## PARTS LIST

### Roof Carrier Kit (P/N 08L02-T47-100)

Front roof carrier (Identification mark: FRONT LEFT)	Rear roof carrier (Identification mark: REAR LEFT)	Right front cushion (Identification mark: FR-R)	Left front cushion (Identification mark: FR-L)
			
Right rear cushion (Identification mark: RR-R)	Left rear cushion (Identification mark: RR-L)	Keys (2)	Wrench
			
Slot covers (2)	Accessory User's Information Manual		
			

## REQUIRED TOOLS AND SUPPLIES

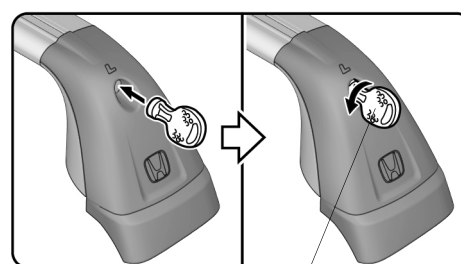
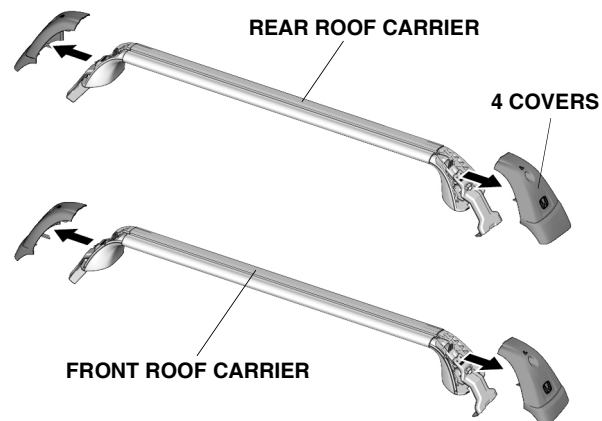
Utility knife

## INSTALLATION

1. Remove the covers.

### NOTICE

This roof carrier can support one roof mounted bike attachment only. Damage to the roof will occur if more than one bike attachment is used.



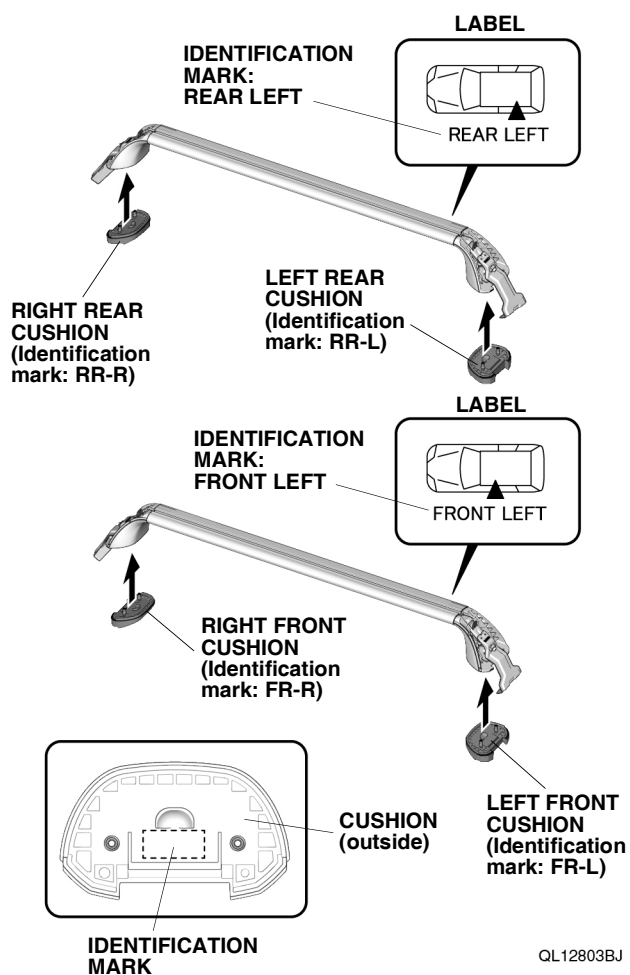
**KEY**  
(Turn counterclockwise.)

QL12802BJ

2. Install the cushions.

### NOTE

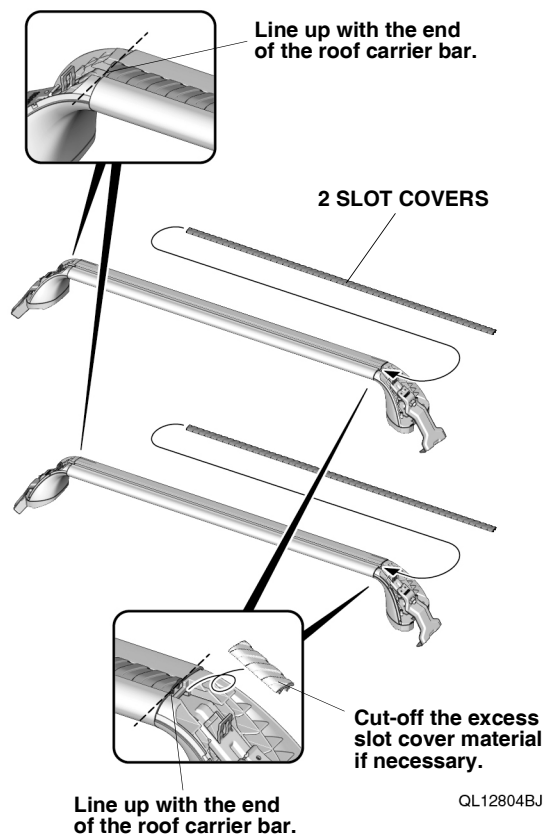
Make sure to check the identification mark before installation.



3. Install the slot covers.

**NOTE**

Cut-off the excess slot cover material if necessary.



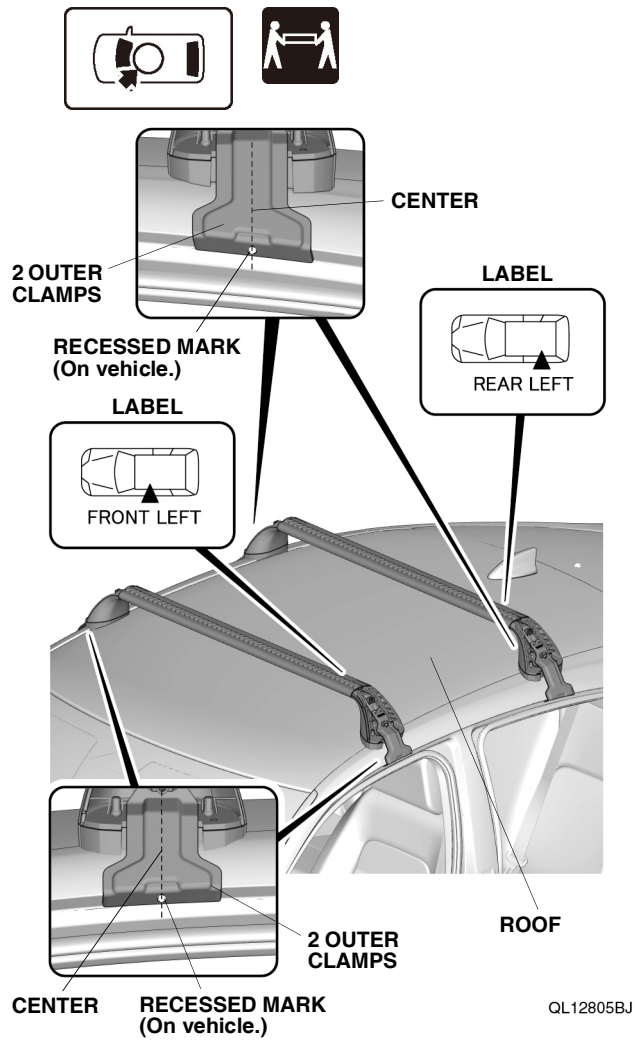
4. Position the roof carriers.

**NOTE**

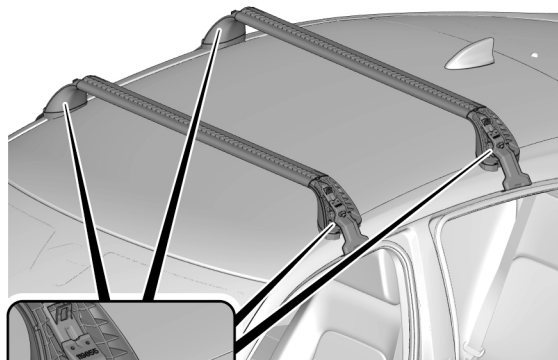
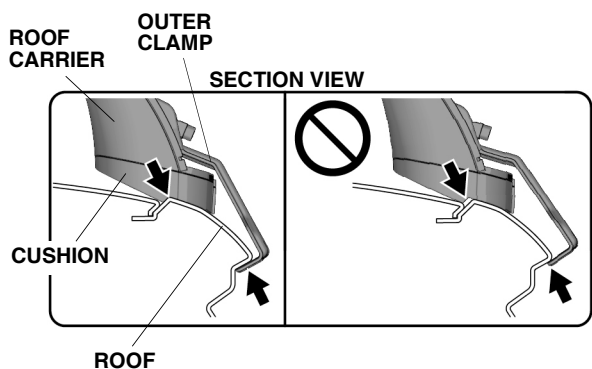
Make sure to check the label before installation.

## NOTE

Tighten the right and left socket bolts alternately to evenly distribute the pressure.



5. Secure the roof carriers.



4 SOCKET  
BOLTS

4 OUTER  
CLAMPS

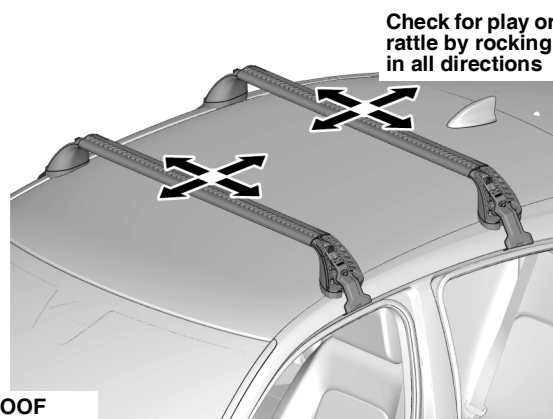
WRENCH  
(Turn until you hear  
a clicking sound.)

QL12806CJ

6. Ensure the roof carriers are secured.

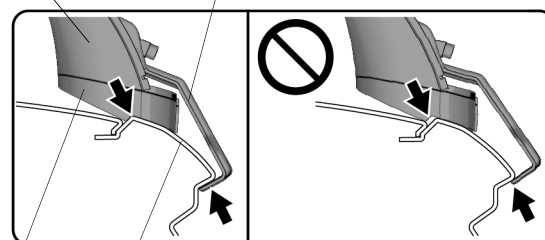
## NOTE

- Rock the roof carriers in all directions to check if they are installed securely without play or rattle.
- If found with abnormal play or rattle, retighten the socket bolts, or reinstall the roof carriers as described in these installation instructions.



ROOF  
CARRIER

OUTER CLAMP



CUSHION

SECTION VIEW

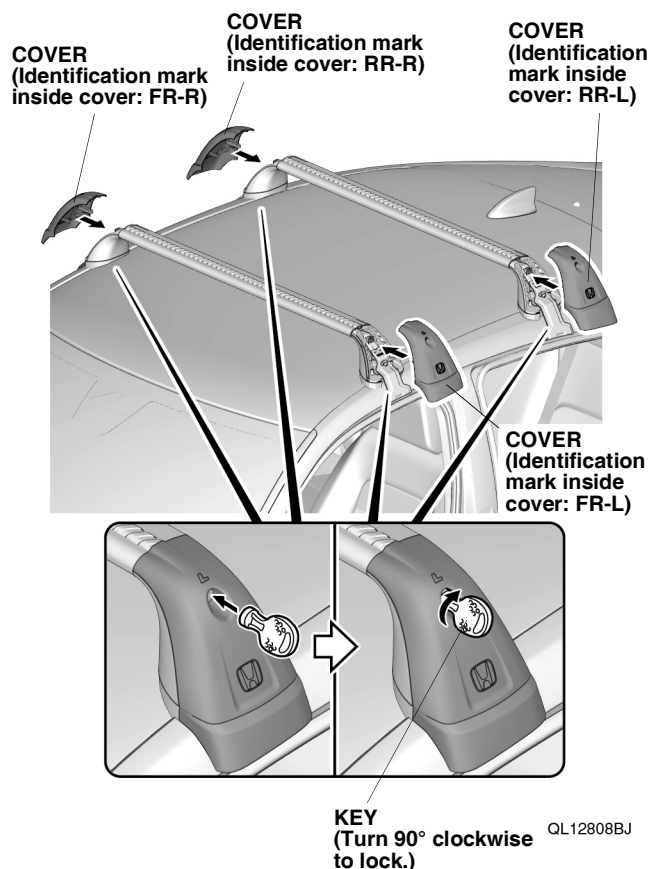
ROOF

QL12807CJ

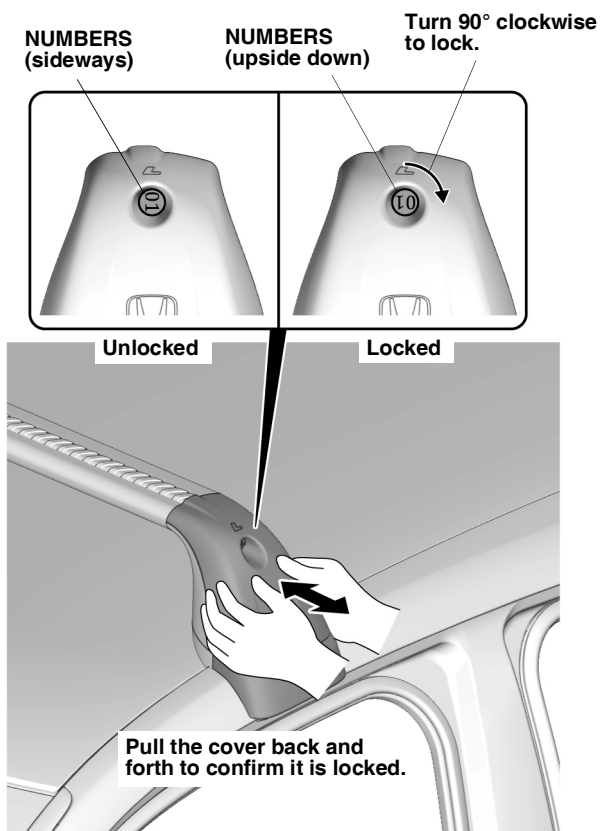
7. Install the covers.

## NOTE

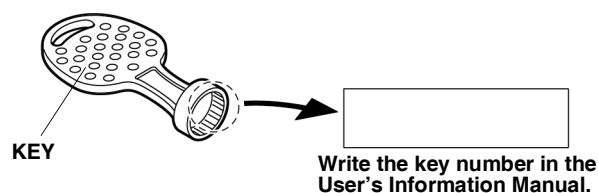
Make sure to check the identification mark before installation.



8. Confirm the covers are locked.



9. Write down the key number.



10. Check that all parts are installed properly.
11. Give the Accessory User's Information Manual to the customer.